



PRECISION
FLIGHT CONTROLS

THROTTLE QUADRANT CONSOLE USER GUIDE



CONTENTS

1 PRECAUTIONS AND WARNINGS

2 INTRODUCTION

3 HARDWARE INSTALLATION

4 SWITCHING QUADRANTS

5 CONFIGURE HARDWARE FOR X-PLANE USE

6 INSTALLATION OF PFCUSBHID PLUGIN FOR X-PLANE

7 CHANGING THROTTLE QUADRANT IN USBHIDPLUGIN

8 WARRANTY INFORMATION

1 | PRECAUTIONS & WARNINGS

SAFETY

THIS PRODUCT HAS BEEN DESIGNED WITH CONCERN FOR SAFETY. HOWEVER, ANY ELECTRICAL DEVICE, IF USED IMPROPERLY, HAS THE POTENTIAL FOR CAUSING FIRE, ELECTRICAL SHOCK OR PERSONAL INJURY.

TO HELP ENSURE ACCIDENT-FREE OPERATION, FOLLOW THESE GUIDELINES:

- OBSERVE ALL WARNINGS, PRECAUTIONS AND INSTRUCTIONS.
- REGULARLY INSPECT POWER AND USB CONNECTIONS.
- STOP USE AND DISCONNECT FROM ELECTRICAL OUTLET IMMEDIATELY IF POWER OR USB CONNECTION ARE
- DAMAGED OR IF DEVICE PRODUCES UNUSUAL SOUNDS OR SMELL OR BECOMES HOT TO THE TOUCH.

PRECAUTIONS

BEFORE USING THE PRODUCT, CAREFULLY READ THIS MANUAL AND RETAIN IT FOR FUTURE REFERENCE. IT IS IMPORTANT TO ENSURE THAT ALL USERS FOLLOW SAFETY PRECAUTIONS AND WARNINGS.

WARNINGS

THIS DEVICE IS ONLY FOR FLIGHT SIMULATION USE. NO OTHER USE IS RECOMMENDED.

THIS DEVICE IS FOR INDOOR USE ONLY. DO NOT EXPOSED TO MOISTURE, LIQUID OR HEAT.

THE DEVICE IS NOT A TOY. CHILDREN SHOULD NOT OPERATE IT WITHOUT ADULT SUPERVISION.

MAKE SURE THAT THE DEVICE IS ON A FLAT STABLE SURFACE. FAILURE TO DO SO MAY RESULT IN THE DEVICE FALLING WHICH MAY RESULT IN BODILY INJURY, DEATH AND DAMAGE TO THE DEVICE.

DO NOT REMOVE THE COVER. OPERATION WITHOUT THE COVER MAY RESULT IN ELECTRIC SHOCK.

DO NOT ATTEMPT TO SERVICE THE DEVICE. REFER SERVICING TO QUALIFIED PERSONNEL ONLY.

DO NOT PLACE DEVICE ON SURFACES THAT ARE UNSTABLE, TILTED OR SUBJECT TO VIBRATION.

DO NOT PLACE THE SYSTEM IN AN AREA SUBJECT TO EXCESSIVE DUST OR CIGARETTE SMOKE. DUST BUILD-UP OR CIGARETTE SMOKE RESIDUE ON THE INTERNAL COMPONENTS MAY CAUSE THE SYSTEM TO MALFUNCTION.

2 | INTRODUCTION

CONGRATULATIONS ON YOUR PURCHASE OF THE PFC USB THROTTLE QUADRANT CONSOLE!

THE CONSOLE IS GREAT TOOL IN ADVANCING YOUR FLIGHT SIMULATION. THE UNIT IS EQUIPPED WITH RUDDER TRIM, FLAPS SWITCH, LATCHING LANDING GEAR SWITCH AND CAN BE MATED WITH ANY OF THE 22 THROTTLE QUADRANT AND VERNIER CONTROLS AVAILABLE.

THE POWDER COATED SOLID ALUMINUM BASE AND TOP PROVIDES A DURABLE FINISH. THE CONSOLE USES MACHINED BRASS PUSH RODS TO ENSURE SMOOTH ACTUATION OF SENSORS.

DEFINITIONS AND ABBREVIATIONS

USB TQUAD: PFC USB THROTTLE QUADRANT CONSOLE

USB: UNIVERSAL SERIAL BUS (CONNECTION USED BY THE CIRRUS II TO THE COMPUTER)

COMPATIBILITY

THE USB TQUAD IS FULLY COMPATIBLE WITH X-PLANE 9.70. BETA DRIVERS MAY BE AVAILABLE FOR LATER VERSION OF X-PLANE. THE CIRRUS II CONSOLE IS NOT COMPATIBLE WITH FS9, FSX OR PREPAR3D OR PREPAR3D V4.

DIMENSIONS & WEIGHT

WIDTH: 12 IN. / 30.48 CM.

DEPTH: 9 5/8 IN. / 24.45 CM.

HEIGHT: 5 IN. / 12.70 CM.

WEIGHT: 12 LBS / 15.88 KG

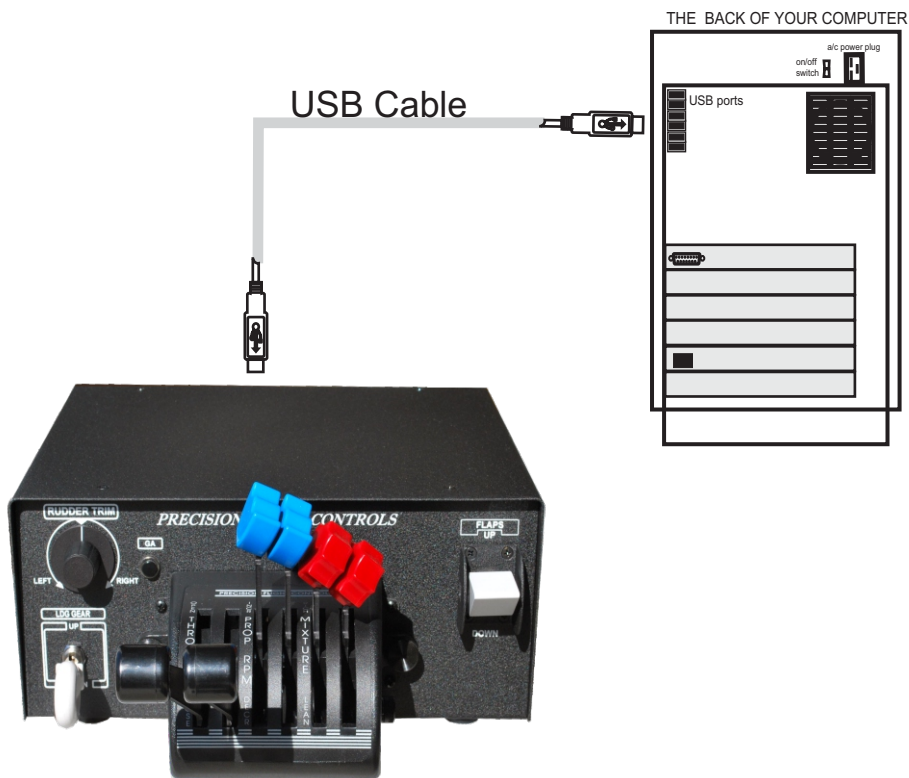
PACKAGE CONTENTS

- (1) USB THROTTLE QUADRANT CONSOLE
- (1) 6 FOOT USB CABLE
- (1) USER'S GUIDE

3 | INSTALLATION

1. CHECK PACKAGING FOR DAMAGE. DO NOT UNPACK ITEM IF THERE ARE ANY DAMAGE. REPORT ANY DAMAGE TO THE CARRIER AND PFC TECHNICAL SUPPORT. TAKE CLEAR PICTURE OF ANY DAMAGE. PLEASE EMAIL THE PICTURES TO techsupport@flypfc.com.
2. IF USB TQUAD IS UNDAMAGED. CAREFULLY LIFT IT OUT OF THE BOX.
3. SET THE USB TQUAD ONTO YOUR DESK.
4. CONNECT THE USB CABLE ON THE BACK OF THE USB TQUAD.
5. CONNECT THE USB CABLE TO AN OPEN USB 2.0 PORT ON BACK OF THE COMPUTER.
8. PROCEED TO THE NEXT PAGE TO INSTALL THE USBHIDPLUGIN FOR X-PLANE 9.70

USB THROTTLE QUADRANT CONSOLE CONNECTION



4 | SWITCHING QUADRANTS

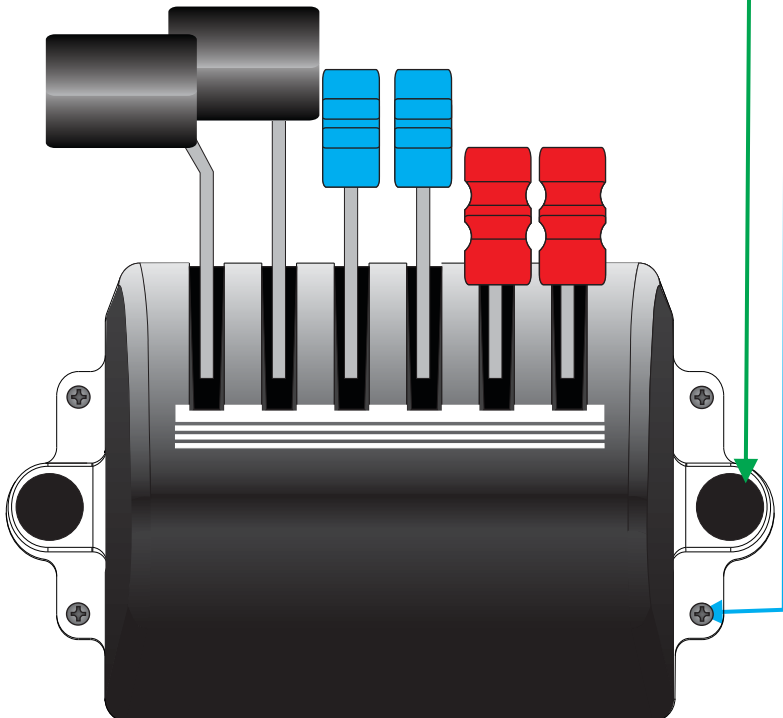
THERE ARE 2 MAIN STYLES OF CONTROLS THAT IS COMPATIBLE WITH USB TQUAD. THE QUADRANT STYLE AND VERNIER STYLE. PFC MANUFACTURES DIFFERENT QUADRANT AND VERNIER CONTROLS FOR PISTON SINGLE AND TWIN, SINGLE AND TWIN TURBO PROP, ONE, TWO, THREE AND FOUR ENGINE JETS.

SWITCHING TO A NON VERNIER QUADRANT

1. PULL ALL THE LEVERS BACK.
2. REMOVE THE THUMBSCREW ON EACH SIDE.
3. ALIGN NEW QUADRANT TO PUSH RODS.
4. REINSTALL THUMBSCREWS. ←

SWITCHING TO A VERNIER CONTROL

1. INSTALL A TWIN NON-VERNIER QUADRANT.
2. REMOVE THE FOUR (4) SCREWS ~~AROUND THE PANEL.~~
3. CAREFULLY PULL THE ASSEMBLY OUT.
4. DISCONNECT THE RJ-45 CABLE.
5. CONNECT THE RJ-45 CABLE TO THE VERNIER UNIT.
6. CAREFULLY INSERT AND THEN ALIGN THE SCREW HOLES.
7. SECURE THE UNIT WITH THE SCREWS.
8. STORE THE NON VERNIER UNIT IN A SAFE PLACE.



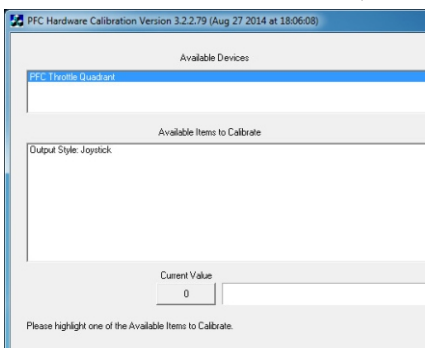
5 | CONFIGURE HARDWARE FOR X-PLANE USE

THE USB THROTTLE QUADRANT CONSOLE OUTPUT STYLE MUST BE CHANGED TO PFC USB FOR PROPER OPERATION WITH X-PLANE. THE STEPS BELOW SHOW HOW TO CHANGE THIS CONFIGURATION.

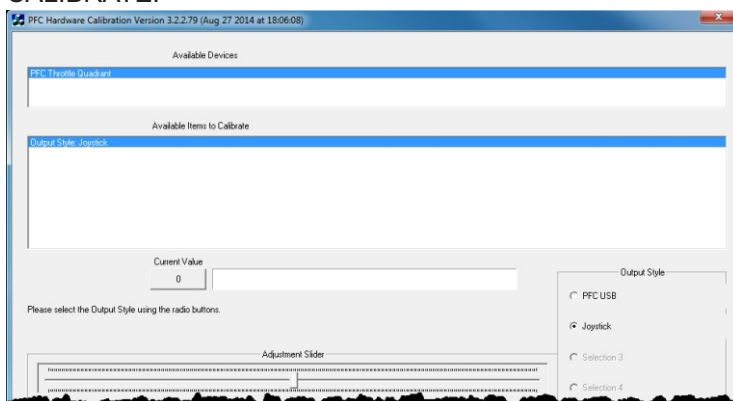
YOU MUST HAVE THE PFC UTILITIES INSTALLED. IF ALREADY INSTALLED THIS IS USUALLY LOCATED IN THE C: DRIVE. IF YOU HAVE NOT INSTALLED IT, YOU MAY DOWNLOAD IT FROM:

<https://flypfc.com/SUPPORT/#usbdriverutils>.

1. PLUG USB CABLE TO THE USB THROTTLE QUADRANT CONSOLE.
2. START THE PFC HARDWARE CALIBRATION. USUALLY LOCATED IN PFC UTILITIES OR PFC TOOLS FOLDER.
3. CHOOSE "PFC THROTTLE QUADRANT" FROM AVAILABLE DEVICES.



4. CHOOSE THE OUTPUT STYLE FROM THE AVAILABLE ITEMS TO CALIBRATE.



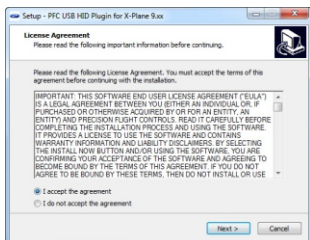
5. SELECT THE PFC USB OPTION ON THE RIGHT SIDE.
6. ONCE YOU HAVE SELECTED ONE OF THE OPTIONS THAT OPTION WILL TURN GREY AND NOW THE CONFIGURATION IS COMPLETE. CLICK ON QUIT TO CLOSE THE WINDOW.

6 | INSTALLATION OF PFCUSBHID PLUGIN FOR X-PLANE

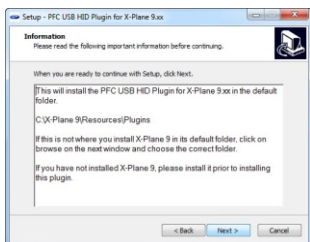
THE PFCUSBHID PLUGIN, IS THE SOFTWARE MAKES USB DEVICES MANUFACTURED BY PRECISION FLIGHT CONTROLS, INC WORK WITH X-PLANE 9.70. IF YOU ARE USING OUR SERIAL DEVICE/S, PLEASE DO NOT INSTALL THIS AS THEY ARE NOT COMPATIBLE. THIS GUIDE ASSUMES THAT YOU HAVE INSTALLED THE X-PLANE 9.70. IF YOU HAVE NOT, PLEASE REFER TO YOUR SOFTWARE MANUAL FOR SOFTWARE INSTALLATION.

PFCUSBHID INSTALLATION STEPS

1. GO TO <https://flypfc.com/support/#usbdriverutils>
2. CLICK ON DOWNLOAD PFC USB HID PLUGIN FOR X-PLANE 9.70
3. SELECT THE DESKTOP AS YOUR DOWNLOAD DESTINATION.
4. UNZIP THE PFCUSBHIDPLUGIN-XPLANE970.ZIP FILE.
5. DOUBLE CLICK ON THE
PFCUSBHID_PLUGIN_XP9.XX_XXXX.EXE
6. READ THE LICENSE AGREEMENT. YOU WILL NEED TO ACCEPT THE AGREEMENT TO BE ABLE TO USE THE PLUGIN. CLICK ON I ACCEPT THE AGREEMENT AND THEN CLICK ON NEXT. IF YOU DO NOT AGREE, PLEASE CLICK ON CANCEL.

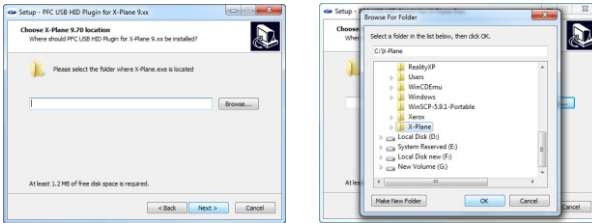


7. THIS EXPLAINS THAT THE PLUGIN WILL BE INSTALLED ON THE DEFAULT LOCATION OF C:\X-PLANE\RESOURCES\PLUGINS. YOU CAN CHANGE THIS ON THE NEXT STEP.

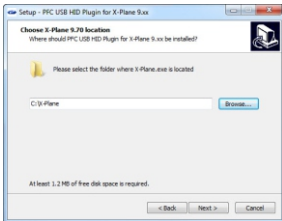


CONTINUED ON NEXT PAGE

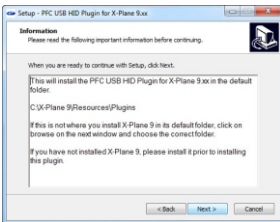
8. CLICK ON BROWSE AND SELECT THE CORRECT FOLDER WHERE X-PLANE.EXE IS LOCATED.



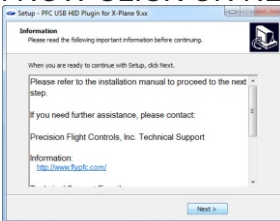
9. AFTER SELECTING THE FOLDER, CLICK ON NEXT.



10. IF THE FOLDER SELECTED CONTAINS X-PLANE.EXE YOU WILL SEE THE WINDOW BELOW. CLICK ON THE INSTALL TO START INSTALLATION.



12. NOW CLICK ON NEXT.



13. NOW CLICK ON FINISH.



14. START X-PLANE.

7 | CHANGING THROTTLE QUADRANT IN USBHIDPLUGIN

THE USB TQUAD CAN BE USED WITH DIFFERENT THROTTLE QUADRANTS STYLES MANUFACTURED BY PFC. FOR PROPER OPERATION YOU MUST SELECT THE APPROPRIATE QUADRANT IN THE PLUGINS MENU OF THE X-PLANE.

TO CHANGE IT:

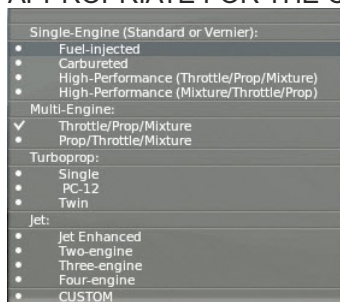
1. RUN X-PLANE.
2. ACCESS THE MENU OF X-PLANE BY MOVING YOUR MOUSE TO THE TOP OF THE SCREEN.

About File Aircraft Location Environment Settings View Special Plugins

3. CLICK ON PLUGINS AND CHOOSE “PFC STANDARD THROTTLE QUADRANTS.”



4. FROM THE SELECTION WINDOW, CHOOSE THE ONE THAT IS APPROPRIATE FOR THE QUADRANT YOU HAVE.



8 | LIMITED WARRANTY INFORMATION

WHAT'S COVERED BY OUR LIMITED WARRANTY

PRECISION FLIGHT CONTROLS, INC. (HEREAFTER "PFC") WARRANTS ITS HARDWARE PRODUCTS TO THE ORIGINAL OWNER TO BE FREE FROM DEFECTS IN WORKMANSHIP AND MATERIALS WHEN USED PROPERLY FOR A PERIOD OF ONE (1) YEAR FROM THE DATE OF DELIVERY.

WHAT'S NOT COVERED BY OUR LIMITED WARRANTY

PRODUCT FAILURE DUE TO IMPROPER INSTALLATION, MAINTENANCE, MISUSE, ACCIDENT, ABUSE, NEGLECT, UNAUTHORIZED REPAIR, MODIFICATION OR ALTERATION REMOVAL OR REPLACEMENT COSTS OR LOSS OF REVENUE INCURRED DUE TO DOWNTIME DAMAGE TO RELATED COMPONENTS NORMAL WEAR-AND-TEAR DAMAGE INCURRED DURING SHIPPING TRANSIT, IMPORTATION OR CUSTOMS CLEARANCE PRODUCTS OR SOFTWARE MANUFACTURED BY OTHER COMPANIES SOFTWARE OR DATA LOSS COSMETIC DAMAGES SUCH AS UPHOLSTERY, PAINT, POWDER COAT, STICKERS, WRAPS, SILK SCREEN OR ANY OTHER DAMAGES THAT DO NOT DIRECTLY IMPACT THE USE OF THE PRODUCT IN ITS INTENDED ROLE AS A AVIATION TRAINING DEVICE (ATD) OR GAME CONTROLLER EXPENDABLE ITEMS SUCH AS LIGHT BULBS, BATTERIES AND ETC. LANDING GEAR SWITCH

WHAT PFC WILL DO ON AN APPROVED WARRANTY CLAIM

IF DURING THE WARRANTY PERIOD YOU SUBMIT A WARRANTY CLAIM AND IT IS APPROVED BY PFC, AT PFC'S SOLE DISCRETION WE WILL:

REPAIR THE PRODUCT - USING NEW OR RECONDITIONED PARTS WHICH ARE FUNCTIONALLY EQUIVALENT TO NEW IN PERFORMANCE AND RELIABILITY.

REPLACE THE PRODUCT- USING NEW OR RECONDITIONED PRODUCTS WHICH ARE FUNCTIONALLY EQUIVALENT TO NEW IN PERFORMANCE AND RELIABILITY.

IN THE EVENT A WARRANTY CLAIM IS APPROVED AND THE PRODUCT IS RETURNED DUE TO DEFECT AS STATED ABOVE, A REFUND IN FULL WILL BE ISSUED. IF PRODUCT IS RETURNED WITHIN THE WARRANTY PERIOD, BUT THE RETURN IS NOT RELATED TO DEFECT, A REFUND WILL BE ISSUED LESS A FIFTEEN PERCENT (15%) RESTOCKING FEE.

OBTAINING WARRANTY EVALUATION & SERVICE

ALL WARRANTY QUESTIONS OR CLAIMS MUST FIRST BE DIRECTED TO THE PFC TECHNICAL SUPPORT TEAM. PLEASE BE PREPARED TO PROVIDE THE PFC WITH THE PRODUCT SERIAL NUMBER AND/OR PURCHASE INVOICE NUMBER FOR VERIFICATION. PFC'S TECHNICAL SUPPORT TEAM MAY BE REACHED BY PHONE: (916) 414-1316 OR EMAIL: techsupport@flypfc.com

PFC WILL DETERMINE IF THE PRODUCT HAS FAILED DUE TO DEFECTIVE WORKMANSHIP OR MATERIALS. PFC RESERVES THE RIGHT TO ASSESS FEES ASSOCIATED WITH DIAGNOSTIC SERVICES. IF THE PRODUCT IS DETERMINED TO HAVE AN ISSUE WHICH IS COVERED BY THE WARRANTY, THE CUSTOMER MAY CHOOSE ONE OF SERVICE OPTIONS BELOW:

MAIL IN SERVICE

THIS SERVICE WILL REQUIRE THE CUSTOMER TO SEND THE DEFECTIVE PRODUCT OR PART TO PFC. THE CUSTOMER MUST FOLLOW PFC'S RETURN MATERIAL AUTHORIZATION (RMA) PROCEDURE PRIOR TO RETURNING ANY ITEM. PLEASE NOTE THAT IN THE EVENT AN ITEM IS RETURNED AND THE PACKAGE DOES NOT DISPLAY THE RMA NUMBER (PER THE RMA PROCESS), THE DELIVERY MAY BE REFUSED. FULL INSTRUCTIONS FOR PFC'S RMA PROCESS CAN BE FOUND AT: https://flypfc.com/wp-content/uploads/suppoprt/rma_form.pdf

ADVANCE REPLACEMENT PART SERVICE

THIS SERVICE ALLOWS OUR CUSTOMERS TO SERVICE THEIR OWN PFC PRODUCT. PFC WILL SEND THE REPLACEMENT PART SO THE CUSTOMER MAY PERFORM THE INSTALLATION OF THE PART. PFC WILL REQUIRE ADVANCE PAYMENT FOR THE PART AND SHIPPING CHARGES. THE ORIGINAL PART MUST BE RETURNED TO PFC VIA A REPUTABLE SHIPPING SERVICE WITHIN TEN (10) BUSINESS DAYS. IN THE EVENT THE CUSTOMER DOES NOT RETURN THE PART WITHIN THE ALLOTTED TIME PERIOD, NO REFUND WILL BE ISSUED.

ON-SITE REPAIR SERVICE

THIS SERVICE IS AVAILABLE FOR ADVANCED AVIATION TRAINING DEVICE (AATD) ONLY. SCHEDULE PERMITTING, PFC WILL SEND A TECHNICIAN TO YOUR LOCATION TO SERVICE THE AATD. AFTER THE FIRST 90 DAYS FROM THE DATE OF SHIPMENT, THE CUSTOMER WILL BE RESPONSIBLE FOR ALL EXPENSES AND LABOR COST FOR THE ON-SITE SERVICE.

WARRANTY FOR REPLACEMENT PARTS OR UNITS

ANY REPLACEMENT PARTS OR UNIT PROVIDED DURING THE WARRANTY PERIOD WILL BE COVERED BY THE REMAINING BALANCE OF TIME ON THE CUSTOMER'S ORIGINAL LIMITED WARRANTY. REPLACEMENT PARTS WILL NOT BE COVERED BY AN EXTENDED OR SEPARATE WARRANTY PERIOD.

RETURN SHIPMENT OPTIONS

PFC, AT ITS OWN EXPENSE, WILL SHIP THE REPAIRED OR REPLACEMENT PRODUCT TO THE CUSTOMER'S ORIGINAL SHIPPING ADDRESS AS REFLECTED ON THE ORIGINAL ORDER/INVOICE. PFC WILL SHIP VIA UPS GROUND OR AN EQUIVALENT SERVICE. IF EXPEDITED SHIPPING IS REQUIRED, THE CUSTOMER WILL BE RESPONSIBLE FOR SHIPPING CHARGES.

THE SELLER DISCLAIMS ANY AND ALL WARRANTIES, EXPRESS OR IMPLIED, STATUTORY OR OTHERWISE, INCLUDING WARRANTIES OF MERCHANTABILITY OR FITNESS FOR A PARTICULAR PURPOSE. SELLER DOES NOT WARRANT THAT THE ANY OF ITS PRODUCTS, ITS USE OR OPERATION OR THE SERVICES PROVIDED UNDER THIS AGREEMENT WILL BE ERROR-FREE, WITHOUT ACCIDENT OR ACHIEVE ANY PARTICULAR GOAL OR RESULT. NO ORAL OR WRITTEN INFORMATION OR ADVICE GIVEN BY AN AUTHORIZED SELLER'S REPRESENTATIVE SHALL CREATE ANY WARRANTY. THIS DISCLAIMER CONSTITUTES AN ESSENTIAL PART OF THIS LIMITED WARRANTY. IN NO EVENT AND UNDER NO LEGAL THEORY SHALL SELLER, ITS OFFICERS, EMPLOYEES OR REPRESENTATIVES BE LIABLE TO BUYER OR ANY OTHER PERSON FOR LOST PROFITS, BUSINESS INTERRUPTION, DAMAGE TO EQUIPMENT, PERSONAL INJURY OR ANY OTHER DIRECT, INDIRECT, INCIDENTAL, CONSEQUENTIAL OR PUNITIVE DAMAGES ARISING OUT OF OR RELATED TO THIS LIMITED WARRANTY OR THE GOODS OR SERVICES SUPPLIED, WHETHER FROM BREACH OF CONTRACT, BREACH OF WARRANTY, TORT (INCLUDING NEGLIGENCE) OR ANY OTHER FORM OF ACTION, EVEN IF SELLER HAS BEEN ADVISED OF THE POSSIBILITY OF SUCH DAMAGES. WITHOUT LIMITING THE FOREGOING, SELLER IS NOT LIABLE FOR BUYER'S IMPROPER USE, INSTALLATION, ACCIDENTS, OPERATION OR MAINTENANCE OF ANY PRODUCT OR OTHER ITEMS MANUFACTURED BY SELLER.

**PRECISION FLIGHT CONTROLS, INC. | 2747 MERCANTILE DRIVE
SUITE 100 | RANCHO CORDOVA CA 95742 | T: 916.414.1310**