



## CR-12 ProPanel

**High-Fidelity Performance.  
Exceptional Value**



### **The Precision Flight Controls (PFC) CR-12 ProPanel FAA Approved Advanced Aviation Training Device (AATD)**

The **CR12 ProPanel AATD Desktop Simulator** is a high-fidelity professional flight training device engineered to deliver an exceptional level of realism, capability, and reliability in a compact desktop platform. Designed to support a wide range of training environments, the CR12 ProPanel allows pilots to operate **Single-Engine (SEL), Multi-Engine (MEL), configurations**, providing an adaptable solution for both **ab-initio and advanced flight training**.

The CR-12 ProPanel reflects PFC's commitment to engineering excellence and uncompromising quality. Built with **aircraft-grade switches, encoders and sensors**, the system delivers the tactile feel and reliability demanded by serious training organizations.

Powered by **laminar Research's flight modeling and integrated avionics options**, the CR-12 ProPanel provides accurate aircraft response, realistic systems operation, and immersive training scenarios—from basic flight maneuvers to advanced instrument procedures.

The result is a **cost-effective FAA-approved Advanced Aviation Training Device (AATD)** that offers **professional-level training capability without the complexity or expense of full-scale simulators**, making it ideal for **flight schools, universities, and professional training programs**.

### **Precision Flight Controls — Train Like Professionals.**

FAA-Approved as an **Advanced Aviation Training Device (AATD)**, the CR-12 ProPanel is engineered for:

- Primary and advanced flight training
- Instrument proficiency
- Scenario-based training and systems management
- Advanced Avionics training

Built with aircraft-grade components and proprietary PFC technology, the CR12 ProPanel provides a realistic cockpit environment that minimizes negative training transfer and maximizes student confidence. Its modular architecture supports a wide range of avionics configurations, including simulated or real Garmin-integrated systems, allowing training organizations to match real-world aircraft platforms with precision.

The CR12 ProPanel is not simply an **Affordable Simulator** — it is a professional training platform designed to elevate standards while delivering measurable return on investment.

## Key Benefits

FAA-Approved AATD – Maximizes loggable training time under Parts 61 and 141

- Single and Multi- Engine Training – Accurate Flight Model Performance
- All-Metal Construction – Commercial-grade durability
- Low Cost of Ownership – Minimal maintenance and high dispatch reliability
- Designed to evolve with avionics and training requirements.
- Small Footprint

## Flight Deck Realism

The CR12 ProPanel delivers true general aviation realism—replicating the look, feel, and layout pilots expect—building confidence and improving skill transfer from simulator to aircraft.

## Standard Avionics Configuration Includes

- NAV/COM Radio
- Bendix/King-style Digital Autopilot
- Altitude Pre-Selector
- Flight Director System
- Transponder
- Simulated Garmin GNS 430w (WAAS)
- ADF (Automatic Direction Finder)
- DME (Distance Measuring Equipment)
- Audio Panel with Marker Beacon
- Instructor Control Station for real-time scenario management
- **Optional** Circuit Breaker Panel



## Advanced Avionics Options Include:

- Simulated or real Garmin **GTN 750Xi /GTN 650Xi** Touchscreen Navigator
- Simulated or real Garmin **GNS 530w and or GNS 430w** (WAAS-enabled)
- Software-driven avionics with precision replica panels
- “Real tactile feel” Aircraft-quality switches, encoders, and control interfaces for authentic tactile feedback and long-term reliability

All advanced configurations are designed to replicate real-world avionics logic and workflow, minimizing negative training transfer and maximizing procedural accuracy. All systems are available as high-fidelity software implementations or replica panels, delivering aircraft-quality reliability, **tactile feel**, and long-term durability, while minimizing negative training transfer.



Shown above with Optional GNS 530w and Circuit Breaker Panel

## High-Resolution Visual System

The CR12 ProPanel AATD features a high-resolution external visual system providing up to 90 degrees of forward field-of-view, with optional multi-channel configurations expanding the visual environment to 120 degrees or greater. The system is optimized for smooth performance, precise visual cues, and realistic depth perception—critical elements for effective training in traffic patterns, instrument approaches, and airport familiarization.



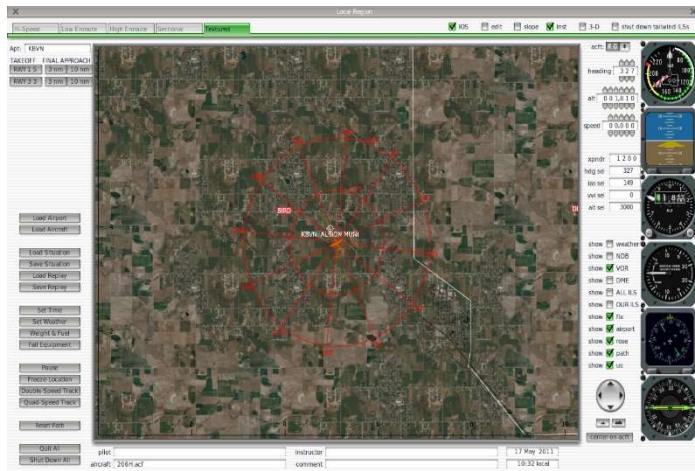
A worldwide database of airports, terrain, and navigation aids is included, allowing pilots to train virtually anywhere in the world with accurate geographic representation.

Powered by the Laminar Researches' Professional visual engine, the CR12 ProPanel benefits from advanced flight dynamics modeling, enhanced atmospheric simulation, and realistic environmental effects, delivering an immersive and highly accurate training experience.

**Note:** When configured with the **single-monitor visual system**, pilots can still **pan the outside view up to 360 degrees**, allowing full situational awareness around the aircraft for traffic scanning, taxi operations, and pattern work.

## Instructor Operator Station (IOS)

The integrated Instructor Operator Station (IOS) allows instructors to manage training sessions through aircraft repositioning, insertion of system failures, environmental and weather control, and real-time monitoring of aircraft state and pilot inputs.



## Lower Total Cost of Ownership

While some simulators cost less upfront, PFC focuses on **long-term value**:

- Fewer repairs
- Longer service life
- Upgradeable platforms (avionics, visuals, software)

Over time, schools consistently see **lower costs per training hour**.

## Real Support from Real Aviation Professionals

Precision Flight Controls does not outsource support to call centers.

You get:

- Knowledgeable technicians
- Direct access to engineers when needed
- Ongoing training and operational support

# Robust Construction

All Aluminum/Steel Construction Enclosure



Feature Rich Flight Console shown with Optional GTN750Xi and GTN650Xi



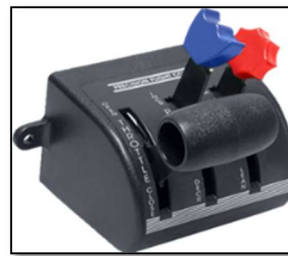
# High Fidelity/Quality Interfaces



Vernier  
Throttle, Prop and Mixture



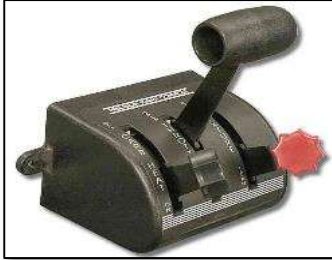
Vernier  
Throttle/Mixture



3-Lever  
Throttle, Prop and Mixture  
**INCLUDED**



6-Lever  
Throttle, Prop and Mixture  
**INCLUDED**

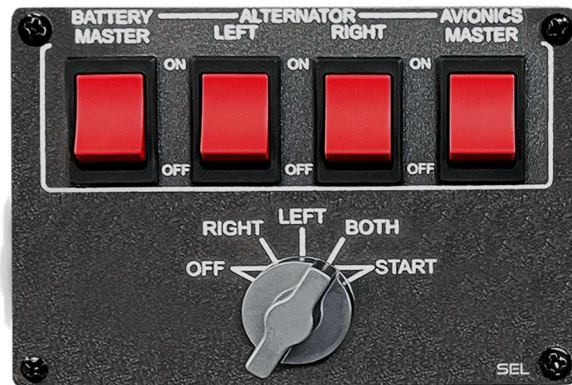
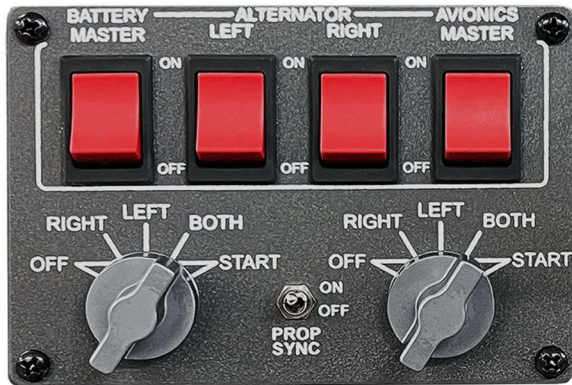


Carbureted  
Carb Heat, Throttle  
and Mixture



4-Way Intercom  
(Included)

Aircraft configuration changes are accomplished by selecting the desired aircraft in the software and installing the applicable master starter panel and throttle quadrant.



Comes with SEL and MEL Master Starter Panels



Aircraft Selection

+



Master Caution Panel

+



Throttle Quadrant

**Improve Your Ergonomics by adding our Seat and Floor Track System with Electric Adjustable Desk**



Optional Adjustable Desk



Optional Floor, Seat And Seat Track System with Rudder Pedals

**Note: The FAA Highly recommends an adjustable seat and rudder pedals that are affixed to a floor!**

## Examples of High-Resolution Analog Panels for Beechcraft, Cessna and Piper



Several Single-Engine Aircraft to choose from:

- Beechcraft Bonanza
- Beechcraft Bonanza TC
- Cessna 172
- Cessna 182
- Cessna 206
- Cessna T206H
- Cessna 210
- Piper Archer
- Piper Arrow IV
- Arrow IV TC
- Piper Arrow TC
- Piper Warrior



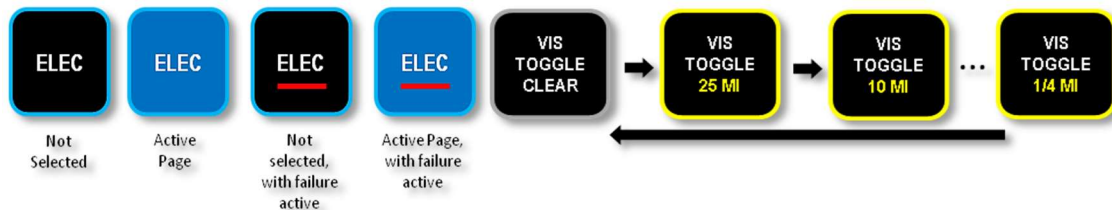
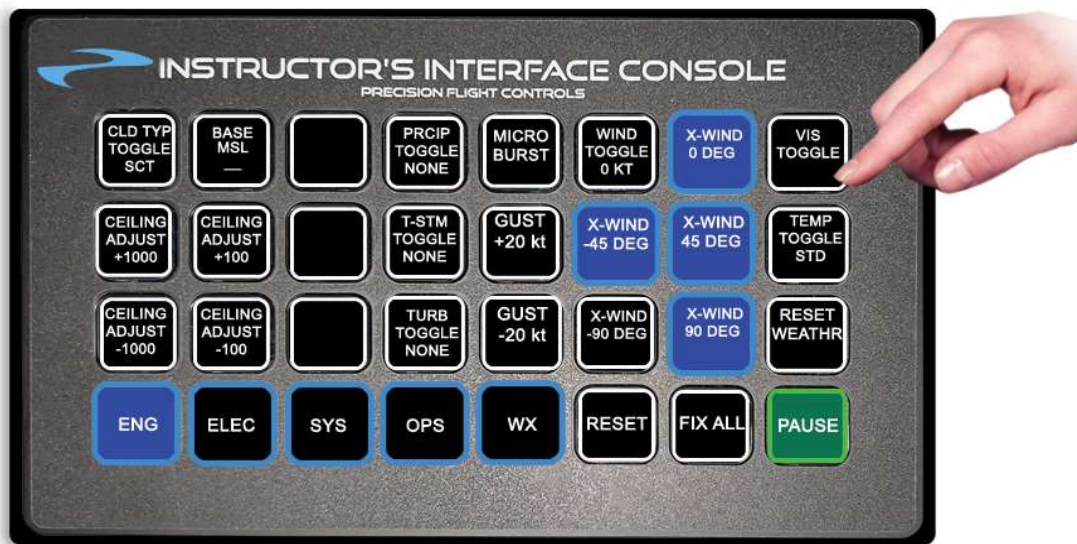
Several Multi-Engine Aircraft to choose from:

- Beechcraft Baron
- Beechcraft Duchess
- Cessna 414
- Cessna 421
- Piper Seminole
- Piper Seminole TC
- Piper Seneca
- Piper Seneca V

**Note: Custom Aircraft Available**



## Instructor's Interface Console



The Instructor's Interface Console is plug and play with a simple USB connection.

You can immediately or pre-set a system failure(s), reposition the airplane, pause the simulation and make weather changes on the fly.

Each tactile button changes color depending on the situation, for example: If you choose to set an engine fire push the Engine Fire Button, (defaulted to **Green** meaning there are no failures selected) once depressed, the button will turn **Red** indicating an Engine Fire has been initiated). You can reset the failure by pushing the button again.

Can be operated from Inside the Flightdeck or outside the Flightdeck at the Instructors Station

## Built for Flight School Reality

Flight schools need equipment that works every day.

### System Features:

- **2 Axis Control Loading**
- Commercial-Grade Components
- High Dispatch Reliability
- Low Maintenance Requirements
- Many Options to fit your training



### Multiple Styles of “Accurate” Yokes Available Control Loading

High Quality Switches for  
Elevator Trim, A/P Disconnect, F/D and PTT

Several Yoke types available for Cessna, Beechcraft and Piper  
Over 20 Aircraft Flight Models Included  
Custom Aircraft Available Upon Request

We understand flight school pressures because we collaborate with them.

You are not just buying a simulator, you are investing in reliability, credibility, and training outcomes!

### Train Like You Fly. From Day One.

**A complete training solution—from first solo to advanced proficiency.**

Crafted with **precision engineering**, **real Garmin™ integration**, and a fully **FAA-compliant architecture**, our simulators deliver **uncompromising realism** and measurable **training value**.

Whether you are training a new pilot or refining advanced procedures, this is the platform professional’s trust.



### Geo-Reference Ready

The CR12 ProPanel AATD is Geo-Reference Ready, allowing seamless integration with electronic flight bag (EFB) applications such as ForeFlight. By connecting an iPad or compatible tablet, the simulator provides real-time positional data so the EFB operates exactly as it would in the aircraft.



<https://www.pilotedge.net/>

### PilotEdge ATC Ready

The CR12 ProPanel AATD is fully compatible with **PilotEdge**, providing access to **live, professional air traffic control services** for an immersive and highly realistic training environment.

With **PilotEdge** integration, pilots can practice real-world ATC communications while flying in a controlled virtual airspace environment. This capability transforms the CR12 ProPanel from a traditional training device into a **fully interactive airspace training platform**, allowing pilots to develop **confidence in radio communication, situational awareness, and ATC procedures** before flying in real-world airspace.

## **Why purchase from Precision Flight Controls?**

For over 34 years Precision Flight Controls helped flight schools train better pilots, reduce operating costs, increase utilization, and protect long-term investments.

**Pricing Starting as Low as:**

*\$29,995.00*



**2747 Mercantile Drive, Ste 100  
Rancho Cordova, California 95742**

**916-414-1310**

[www.flypfc.com](http://www.flypfc.com)  
<mailto:sales@flypfc.com>



**Garmin™ is a trademark of Garmin Ltd. X-Plane® is a registered trademark of Laminar Research. Cessna is a Trademark of Textron Aviation, Inc.**

3-28-2026