



CRX Open Flight Deck

High-Fidelity Performance, Exceptional Value

The Precision Flight Controls (PFC) CRX FAA Approved Advanced Aviation Training Device (AATD)

The **CRX AATD Simulator** is a high-fidelity professional flight training device engineered to deliver an exceptional level of realism, capability, and reliability in a compact desktop platform. Designed to support a wide range of training environments, the CRX allows pilots to operate **Single-Engine (SEL), Multi-Engine (MEL), configurations**, providing an adaptable solution for both **ab-initio and advanced flight training**.

The CRX reflects PFC's commitment to engineering excellence and uncompromising quality. Built with **aircraft-grade switches, encoders and sensors**, the system delivers the tactile feel and reliability demanded by serious training organizations.

Powered by **laminar Research's advanced flight modeling and integrated avionics options**, the CRX provides accurate aircraft response, realistic systems operation, and immersive training scenarios—from basic flight maneuvers to advanced instrument procedures.

The result is a **cost-effective FAA-approved Advanced Aviation Training Device (AATD)** that offers **professional-level training capability without the complexity or expense of full-scale simulators**, making it ideal for **flight schools, universities, and professional training programs**.

Precision Flight Controls — Train Like Professionals.

FAA-Approved as an **Advanced Aviation Training Device (AATD)**, the CRX is engineered for:

- Primary and advanced flight training
- Instrument proficiency
- Scenario-based training and systems management
- Advanced Avionics training
- Add a seat for the instructor for the Co-Pilot to assist with radio functions and operations

Built with aircraft-grade components and proprietary PFC technology, the CRX provides a realistic cockpit environment that minimizes negative training transfer and maximizes student confidence. Its modular architecture supports a wide range of avionics configurations, including simulated or real Garmin-integrated systems, allowing training organizations to match real-world aircraft platforms with precision.

The CRX is not simply an **Affordable Simulator** — it is a professional training platform designed to elevate standards while delivering measurable return on investment.

Key Benefits

FAA-Approved AATD – Maximizes loggable training time under Parts 61 and 141

- Single and Multi- Engine Training – Accurate Flight Model Performance
- All-Metal Construction – Commercial-grade durability
- Low Cost of Ownership – Minimal maintenance and high dispatch reliability
- Designed to evolve with avionics and training requirements.
- Small Footprint

Flight Deck Realism

The CRX delivers true general aviation realism—replicating the look, feel, and layout pilots expect—building confidence and improving skill transfer from simulator to aircraft.

Standard Avionics Configuration Includes

- NAV/COM Radio
- Bendix/King-style Digital Autopilot
- Altitude Pre-Selector
- Flight Director System
- Transponder
- Simulated Garmin GNS 430w (WAAS)
- ADF (Automatic Direction Finder)
- DME (Distance Measuring Equipment)
- Audio Panel with Marker Beacon
- Instructor Control Station for real-time scenario management
- **Optional** Circuit Breaker Panel



Advanced Avionics Options Include:

- Simulated or real Garmin **GTN 750Xi /GTN 650Xi** Touchscreen Navigator
- Simulated or real Garmin **GNS 530w and or GNS 430w** (WAAS-enabled)
- Software-driven avionics with precision replica panels
- “Real tactile feel” Aircraft-quality switches, encoders, and control interfaces for authentic tactile feedback and long-term reliability

All advanced configurations are designed to replicate real-world avionics logic and workflow, minimizing negative training transfer and maximizing procedural accuracy. All systems are available as high-fidelity software implementations or replica panels, delivering aircraft-quality reliability, **tactile feel**, and long-term durability, while minimizing negative training transfer.



Shown above with Optional GNS 530w and Circuit Breaker Panel

High-Resolution Visual System

The CRX AATD is equipped as standard with a high-resolution curved visual display system providing up to 90 degrees of forward field of view. Optional multi-channel visual configurations are available to expand the visual environment to 120 degrees or greater, depending on system configuration.

When configured with the single-monitor visual system, the device permits the pilot to pan the external visual scene through 360 degrees, enhancing situational awareness during traffic scanning, taxi operations, and pattern work. The panning function is activated by pressing and holding the inner rocker switch on the yoke.



Or, add our three-screen visual system allowing more fidelity and situational awareness

Again, simply hold down the inner yoke rocker switch to pan the view left or right.



Shown with Optional Co-Pilot Seat



Shown with Computers and IOS Desk

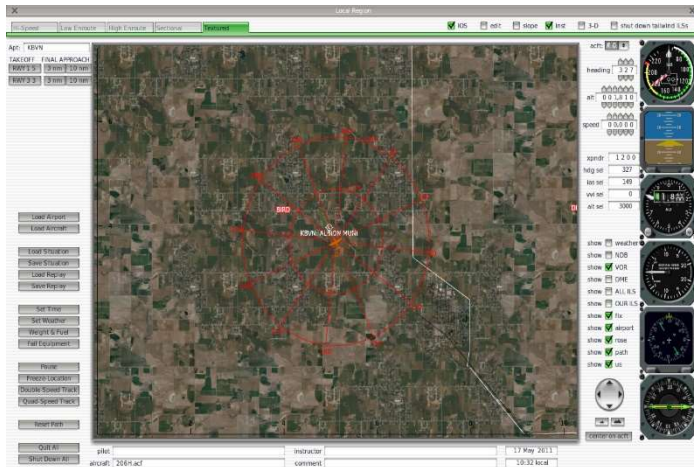
All visuals' systems are optimized for smooth performance, precise visual cues, and realistic depth perception—critical elements for effective training in traffic patterns, instrument approaches, and airport familiarization.

A worldwide database of airports, terrain, and navigation aids is included, allowing pilots to train virtually anywhere in the world with accurate geographic representation.

Powered by Laminar Research's Professional visual engine, the CRX benefits from advanced flight dynamics modeling, enhanced atmospheric simulation, and realistic environmental effects, delivering an immersive and highly accurate training experience.

Instructor Operator Station (IOS)

The integrated Instructor Operator Station (IOS) allows instructors to manage training sessions through aircraft repositioning, insertion of system failures, environmental and weather control, and real-time monitoring of aircraft state and pilot inputs.



Lower Total Cost of Ownership

While some simulators cost less upfront, PFC focuses on **long-term value**:

- Fewer repairs
- Longer service life
- Upgradeable platforms (avionics, visuals, software)

Over time, schools consistently see **lower costs per training hour**.

Real Support from Real Aviation Professionals

Precision Flight Controls does not outsource support to call centers.

You get:

- Knowledgeable technicians
- Direct access to engineers when needed
- Ongoing training and operational support

Robust Construction

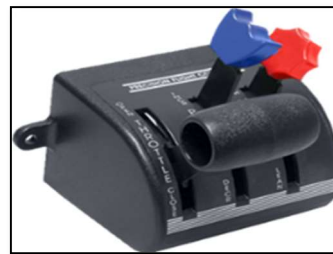
All Aluminum/Steel Construction Enclosure



Feature Rich Flight Console shown with Optional GTN750Xi and GTN650Xi



High Fidelity/Quality Interfaces

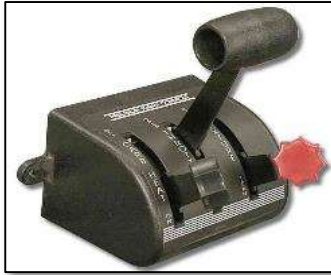


Vernier
Throttle, Prop and
Mixture

Vernier
Throttle/Mixture

3-Lever
Throttle, Prop and
Mixture
INCLUDED

6-Lever
Throttle, Prop and
Mixture
INCLUDED

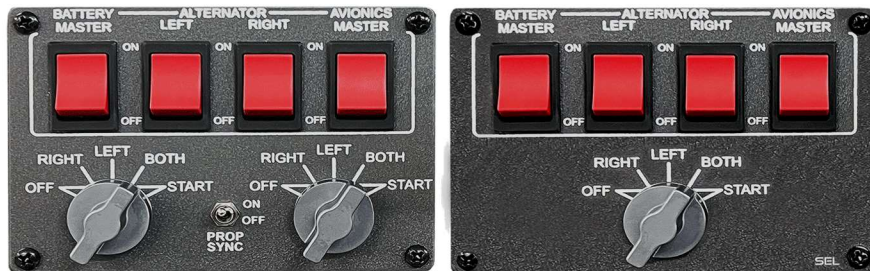


Carbureted
Carb Heat, Throttle
and Mixture



4-Way Intercom
(Included)

Aircraft configuration changes are accomplished by selecting the desired aircraft in the software and installing the applicable master starter panel and throttle quadrant.



Comes with SEL and MEL Master Starter Panels



Aircraft Selection

+



Master Caution Panel

+



Throttle Quadrant

Examples of High-Resolution Analog Panels for Beechcraft, Cessna and Piper



Several Single-Engine Aircraft to choose from:

- Beechcraft Bonanza
- Beechcraft Bonanza TC
- Cessna 172
- Cessna 182
- Cessna 206
- Cessna T206H
- Cessna 210
- Piper Archer
- Piper Arrow IV
- Arrow IV TC
- Piper Arrow TC
- Piper Warrior



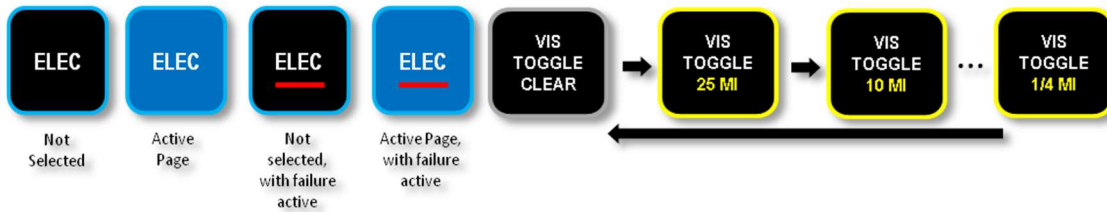
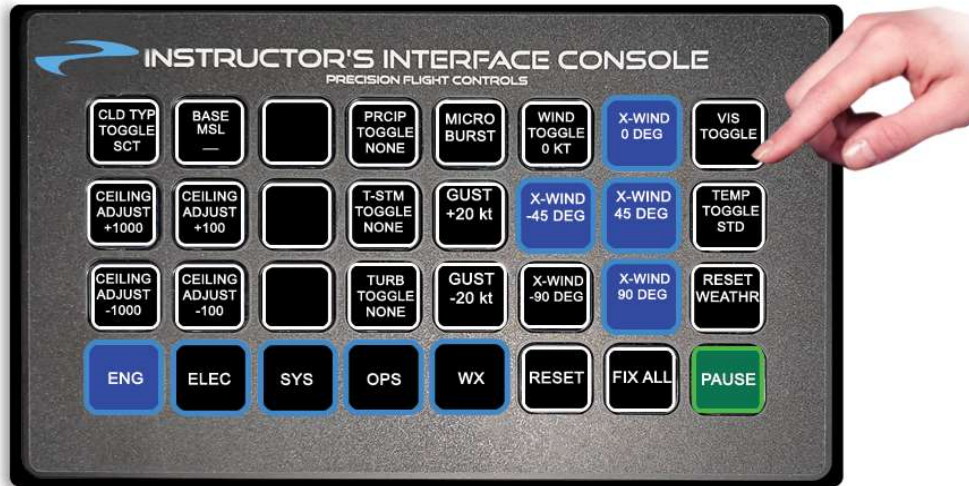
Several Multi-Engine Aircraft to choose from:

- Beechcraft Baron
- Beechcraft Duchess
- Cessna 414
- Cessna 421
- Piper Seminole
- Piper Seminole TC
- Piper Seneca
- Piper Seneca V

Note: Custom Aircraft Available



Instructor's Interface Console



The Instructor's Interface Console is plug and play with a simple USB connection.

You can immediately or pre-set a system failure(s), reposition the airplane, pause the simulation and make weather changes on the fly. Each tactile button changes color depending on the situation, for example: If you choose to set an engine fire push the Engine Fire Button, (defaulted to **Green** meaning there are no failures selected) once depressed, the button will turn **Red** indicating an Engine Fire has been initiated). You can reset the failure by pushing the button again.

The IIC Can be operated from Inside the Flightdeck or outside the Flightdeck at the Instructors Station

Built for Flight School Reality

Flight schools need equipment that works every day.

System Features:

- **2 Axis Control Loading**
- Commercial-Grade Components
- High Dispatch Reliability
- Low Maintenance Requirements
- Many Options to fit your training



Multiple Styles of “Accurate” Yokes Available Control Loading

High Quality Switches for
Elevator Trim, A/P Disconnect, F/D and PTT

Several Yoke types available for Cessna, Beechcraft and Piper
Over 20 Aircraft Flight Models Included
Custom Aircraft Available Upon Request

We understand flight school pressures because we collaborate with them.

You are not just buying a simulator, you are investing in reliability, credibility, and training outcomes!

Train Like You Fly. From Day One.

A complete training solution—from first solo to advanced proficiency.

Crafted with **precision engineering**, **real Garmin™ integration**, and a fully **FAA-compliant architecture**, our simulators deliver **uncompromising realism** and measurable **training value**.

Whether you are training a new pilot or refining advanced procedures, this is the platform professional’s trust.

Geo-Reference Ready



The CRX AATD is Geo-Reference Ready, allowing seamless integration with electronic flight bag (EFB) applications such as ForeFlight. By connecting an iPad or compatible tablet, the simulator provides real-time positional data so the EFB operates exactly as it would in the aircraft.



<https://www.pilotedge.net/>

PilotEdge ATC Ready

The CRX AATD is fully compatible with **PilotEdge**, providing access to **live, professional air traffic control services** for an immersive and highly realistic training environment.

With **PilotEdge** integration, pilots can practice real-world ATC communications while flying in a controlled virtual airspace environment. This capability transforms the CRX from a traditional training device into a **fully interactive airspace training platform**, allowing pilots to develop **confidence in radio communication, situational awareness, and ATC procedures** before flying in real-world airspace.

Why purchase from Precision Flight Controls?

For over 34 years Precision Flight Controls helped flight schools train better pilots, reduce operating costs, increase utilization, and protect long-term investments.

Pricing Starting as Low as:

\$39,995.00



**2747 Mercantile Drive, Ste 100
Rancho Cordova, California 95742**

916-414-1310

www.flypfc.com
<mailto:sales@flypfc.com>



Garmin™ is a trademark of Garmin Ltd. X-Plane® is a registered trademark of Laminar Research. Cessna is a Trademark of Textron Aviation, Inc.

3-28-2026