



PRECISION FLIGHT CONTROLS
THE ULTIMATE FLYING MACHINE™

C2 PROFESSIONAL *DESKTOP FLIGHT CONSOLE* OPERATIONS AND SETUP GUIDE



CONTENTS

1 PRECAUTIONS AND WARNINGS

2 INTRODUCTION

3 INSTALLATION

4 INSTALLATION OF PFCUSBHID PLUGIN FOR X-PLANE 9.70

5 CHANGING THROTTLE QUADRANT TYPE FOR PFCUSBHIDPLUGIN

6 WARRANTY INFORMATION

2 | PRECAUTIONS & WARNINGS

SAFETY

THIS PRODUCT HAS BEEN DESIGNED WITH CONCERN FOR SAFETY. HOWEVER, ANY ELECTRICAL DEVICE, IF USED IMPROPERLY, HAS THE POTENTIAL FOR CAUSING FIRE, ELECTRICAL SHOCK OR PERSONAL INJURY.

TO HELP ENSURE ACCIDENT-FREE OPERATION, FOLLOW THESE GUIDELINES:

- OBSERVE ALL WARNINGS, PRECAUTIONS AND INSTRUCTIONS.
- REGULARLY INSPECT POWER AND USB CONNECTIONS.
- STOP USE AND DISCONNECT FROM ELECTRICAL OUTLET IMMEDIATELY IF POWER OR USB CONNECTION ARE DAMAGED OR IF DEVICE PRODUCES UNUSUAL SOUNDS OR SMELL OR BECOMES HOT TO THE TOUCH.

PRECAUTIONS

BEFORE USING THE PRODUCT, CAREFULLY READ THIS MANUAL AND RETAIN IT FOR FUTURE REFERENCE. IT IS IMPORTANT TO ENSURE THAT ALL USERS FOLLOW SAFETY PRECAUTIONS AND WARNINGS.

WARNINGS

THIS DEVICE IS ONLY FOR FLIGHT SIMULATION USE. NO OTHER USE IS RECOMMENDED.

THIS DEVICE IS FOR INDOOR USE ONLY. DO NOT EXPOSED TO MOISTURE, LIQUID OR HEAT.

THE DEVICE IS NOT A TOY. CHILDREN SHOULD NOT OPERATE IT WITHOUT ADULT SUPERVISION.

ELECTRIC SHOCK / FIRE HAZARD. USE ONLY THE POWER SUPPLY PROVIDED BY PRECISION FLIGHT CONTROLS.

MAKE SURE THAT THE DEVICE IS ON A FLAT STABLE SURFACE. FAILURE TO SO MAY RESULT IN THE DEVICE FALLING WHICH MAY RESULT BODILY INJURY, DEATH AND DAMAGE TO THE DEVICE.

DO NOT REMOVE THE COVER. OPERATION WITHOUT THE COVER MAY RESULT IN ELECTRIC SHOCK.

DO NOT ATTEMPT TO SERVICE THE DEVICE. REFER SERVICING TO QUALIFIED PERSONNEL ONLY.

DO NOT PLACE DEVICE ON SURFACES THAT ARE UNSTABLE, TILTED OR SUBJECT TO VIBRATION.

DO NOT PLACE THE SYSTEM IN AN AREA SUBJECT TO EXCESSIVE DUST OR CIGARETTE SMOKE. DUST BUILD-UP OR CIGARETTE SMOKE RESIDUE ON THE INTERNAL COMPONENTS MAY CAUSE THE SYSTEM TO MALFUNCTION.

3 | INTRODUCTION

CONGRATULATIONS ON YOUR PURCHASE OF THE PFC C2 PROFESSIONAL DESKTOP FLIGHT CONSOLE! THE C2 PROFESSIONAL DESKTOP FLIGHT CONSOLE FEATURES TACTILE SWITCHES, ROBUST YOKE MECHANISM AND CASTED ALUMINUM YOKES.

THE YOKE MECHANISM FEATURES PRECISION BALL BEARINGS WITH SELF ALIGNING BUSHINGS THAT ENSURES SMOOTH AND REALISTIC FEEL THROUGH OUT THE CONTROL MOVEMENT. THE BEARINGS ARE MATCHED WITH A STEEL SHAFT THAT IS PRECISION GROUND AND POLISHED. IT IS ALSO EQUIPPED WITH STATE-OF-THE-ART HALL EFFECT SENSORS FOR PITCH AND ROLL INPUTS FOR LONG TERM FIDELITY.

DEFINITIONS AND ABBREVIATIONS

C2PRO : C2 PROFESSIONAL DESKTOP FLIGHT CONSOLE

USB: UNIVERSAL SERIAL BUS (CONNECTION USED BY THE C2PRO TO THE COMPUTER)

COMPATIBILITY

THE CIRRUS II IS FULLY COMPATIBLE WITH X-PLANE 9.70. BETA DRIVERS MAY BE AVAILABLE FOR LATER VERSION OF X-PLANE. THE C2PRO IS NOT COMPATIBLE WITH FS9, FSX OR PREPAR3D OR PREPAR3D V4.

DIMENSIONS & WEIGHT

WIDTH: 31IN. / 78.74 CM.

DEPTH: 16 IN. / 40.64 CM.

HEIGHT: 9 IN. / 22.86 CM.(TO THE TOP OF ARCH)

WEIGHT: 49 LBS / 22.23 KG

PACKAGE CONTENTS

(1) C2PRO CONSOLE

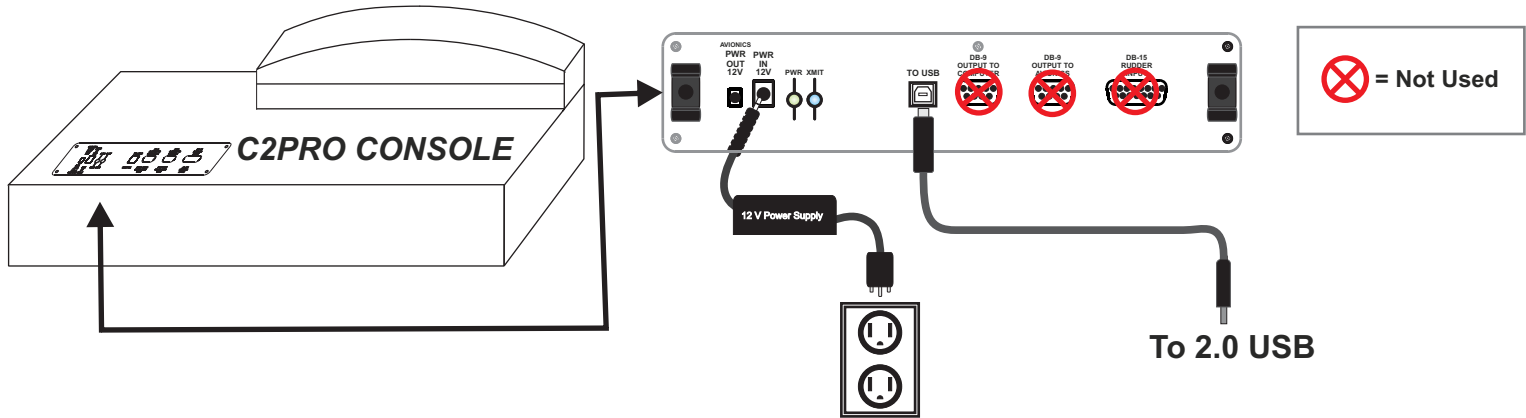
(1) 6 FOOT USB CABLE

(1) USER'S GUIDE

4 | INSTALLATION

1. CHECK PACKAGING FOR DAMAGE. DO NOT UNPACK ITEM IF THERE ARE ANY DAMAGE. REPORT ANY DAMAGE TO THE CARRIER AND PFC TECHNICAL SUPPORT. TAKE CLEAR PICTURE OF ANY DAMAGE. PLEASE EMAIL THE PICTURES TO techsupport@flypfc.com.
2. IF C2PRO IS UNDAMAGED. CAREFULLY LIFT IT OUT OF THE BOX.
3. SET THE C2PRO ONTO YOUR DESK.
4. CONNECT THE USB CABLE ON THE BACK OF THE C2PRO.
5. CONNECT THE POWER TO THE BACK OF THE C2PRO.
6. CONNECT THE POWER TO ELECTRICAL SOCKET.
7. CONNECT THE USB CABLE TO AN OPEN USB 2.0 PORT ON BACK OF THE COMPUTER.
8. PROCEED TO THE NEXT PAGE TO INSTALL THE USBHIDPLUGIN FOR X-PLANE 9.70

C2PRO CONSOLE CONNECTION DIAGRAM



5 | INSTALLATION OF PFCUSBHID PLUGIN FOR X-PLANE 9.70

THE PFCUSBHID PLUGIN, IS THE SOFTWARE MAKES USB DEVICES MANUFACTURED BY PRECISION FLIGHT CONTROLS, INC WORK WITH X-PLANE 9.70. IF YOU ARE USING OUR SERIAL DEVICE/S, PLEASE DO NOT INSTALL THIS AS THEY ARE NOT COMPATIBLE. THIS GUIDE ASSUMES THAT YOU HAVE INSTALLED THE X-PLANE 9.70. IF YOU HAVE NOT, PLEASE REFER TO YOUR SOFTWARE MANUAL FOR SOFTWARE INSTALLATION.

PFCUSBHID INSTALLATION STEPS

1. DOWNLOAD THE PFC USBHIDPLUGIN FOR X-PLANE FROM: <https://flypfc.com/SUPPORT/#usbdriverutils>.
2. CLICK ON THE "DOWNLOAD PFC USB HID PLUGIN FOR X-PLANE 9.70"
3. CHOOSE THE DESKTOP AS DESTINATION FOR DOWNLOAD.
4. UNZIP THE FILE ONTO YOUR DESKTOP.
5. RUN THE PFCUSBHIDPLUGIN INSTALLER.
6. READ THE LICENSE AGREEMENT. YOU WILL NEED TO ACCEPT THE AGREEMENT TO BE ABLE TO USE THE PLUGIN ONCE YOU HAVE AGREED CLICK ON NEXT.
7. SELECT THE LOCATION OF XPLANE AND CLICK ON THE INSTALL TO START INSTALLATION.
8. NOW CLICK ON NEXT.
9. NOW CLICK ON FINISH.
10. LAUNCH X-PLANE 9.70

6 | CHANGING THROTTLE QUADRANT TYPE FOR USBHIDPLUGIN

THE C2PRO CAN BE USED WITH DIFFERENT THROTTLE QUADRANTS STYLES MANUFACTURED BY PFC. FOR PROPER OPERATION YOU MUST SELECT THE APPROPRIATE QUADRANT IN THE PLUGINS MENU OF THE X-PLANE.

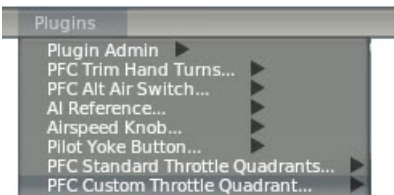
TO CHANGE IT:

1. RUN X-PLANE.
2. ACCESS THE MENU OF X-PLANE BY MOVING YOUR MOUSE TO THE TOP OF THE SCREEN.

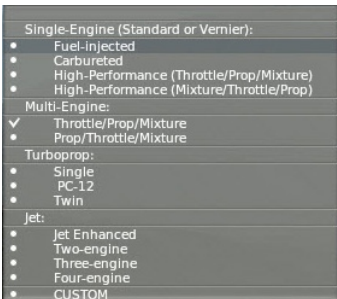


About File Aircraft Location Environment Settings View Special Plugins

3. CLICK ON PLUGINS AND CHOOSE “PFC STANDARD THROTTLE QUADRANTS.”



4. FROM THE SELECTION WINDOW, CHOOSE THE ONE THAT IS APPROPRIATE FOR THE QUADRANT YOU HAVE.



WARRANTY INFORMATION

PRECISION FLIGHT CONTROLS, INC. (PFC) WARRANTS, TO THE ORIGINAL OWNER, THAT ITS PRODUCTS ARE FREE FROM DEFECTS IN MATERIALS AND WORKMANSHIP. PFC WILL, AT ITS OPTION, EITHER REPAIR OR REPLACE ANY PART OF ITS PRODUCTS THAT PROVE DEFECTIVE BY REASON OF IMPROPER WORKMANSHIP OR MATERIALS. REPAIR PARTS OR REPLACEMENT PRODUCTS PROVIDED BY PFC AND WILL BE EITHER NEW OR REFURBISHED TO BE FUNCTIONALLY EQUIVALENT TO NEW.

ONE YEAR WARRANTY ON...

ALL INTERNAL AND EXTERNAL COCKPIT COMPONENTS TO INCLUDE: ELECTRONICS, STRUCTURAL, COMPUTERS, MONITORS, CONTROL LOADING AND MOTION SYSTEM.

ONSITE SERVICE

FOR THE FIRST 90 DAYS OF OWNERSHIP, PFC WILL PROVIDE ONSITE SERVICE AS PFC'S SCHEDULE PERMITS, AT NO CHARGE FOR PARTS OR LABOR. THE CUSTOMER IS RESPONSIBLE FOR ALL TRAVEL EXPENSES TO INCLUDE: HOTEL, AIRFARE AND CAR RENTAL (IF REQUIRED). TRAVEL EXPENSES MUST BE PRE-PAID. AFTER THE FIRST 90 DAYS, IN ADDITION TO TRAVEL EXPENSES, CHARGES FOR LABOR AND PARTS NOT UNDER WARRANTY WILL APPLY.

THIS WARRANTY DOES NOT COVER...

DAMAGE RESULTING FROM ACCIDENT, POWER SURGES, UNREASONABLE USE, NEGLIGENCE, ALTERATIONS, IMPROPER SERVICING, IMPROPER INSTALLATION, CONNECTIONS WITH PERIPHERALS OR OTHER CAUSES NOT ARISING OUT OF DEFECTS IN MATERIALS OR WORKMANSHIP. ANY SERVICE OR REPAIR PROVIDED OUTSIDE THE SCOPE OF THIS LIMITED WARRANTY SHALL BE AT PFC'S RATES AND TERMS IN EFFECT. PFC IS NOT RESPONSIBLE FOR COSTS OR LOSS OF REVENUE INCURRED DUE TO DOWNTIME.

ADVANCE REPLACEMENT (WARRANTY ITEMS ONLY)

IF AN ADVANCE REPLACEMENT FOR ITEMS UNDER WARRANTY IS REQUESTED, CUSTOMER IS REQUIRED TO PROVIDE A CREDIT CARD TO CHARGE THE FULL COST OF THE REPLACEMENT ITEM. ONCE THE DEFECTIVE ITEM IS RECEIVED BY PFC THE CREDIT CARD WILL BE CREDITED. CUSTOMER AGREES TO PAY FOR ALL SHIPPING AND HANDLING COSTS ASSOCIATED WITH REPLACEMENT. THE DEFECTIVE MUST BE RETURNED TO PFC WITHIN 10 BUSINESS DAYS, IF DEFECTIVE ITEM IS NOT RETURNED, THE CUSTOMER AGREES TO PAY FOR THE REPLACEMENT ITEM PLUS SHIPPING AND HANDLING IN FULL.

UNAUTHORIZED REPAIRS

MODIFYING, UPGRADING, OR ALTERING ANY PFC PRODUCT WILL VOID THE WARRANTY. THE CUSTOMER WILL NOT BE COMPENSATED FOR REPAIRS PERFORMED THEMSELVES.

WARRANTY SERVICE

PRIOR TO WARRANTY REPAIR A RETURN AUTHORIZATION NUMBER IS REQUIRED. ITEMS SENT WITHOUT PRIOR AUTHORIZATION WILL BE REFUSED.