



PRECISION FLIGHT CONTROLS

THE ULTIMATE FLYING MACHINE™

CIRRUS II DESKTOP FLIGHT CONSOLE OPERATIONS AND SETUP GUIDE



CONTENTS

1 PRECAUTIONS AND WARNINGS

2 INTRODUCTION

3 INSTALLATION

4 INSTALLATION OF PFCUSBHID PLUGIN FOR X-PLANE 9.70

5 SWITCHING QUADRANTS

6 SWITCHING TO VERNIER CONTROLS

7 USBHIDPLUGIN OPTIONS

8 LIMITED WARRANTY INFORMATION

1 | PRECAUTIONS & WARNINGS

SAFETY

THIS PRODUCT HAS BEEN DESIGNED WITH CONCERN FOR SAFETY. HOWEVER, ANY ELECTRICAL DEVICE, IF USED IMPROPERLY, HAS THE POTENTIAL FOR CAUSING FIRE, ELECTRICAL SHOCK OR PERSONAL INJURY.

TO HELP ENSURE ACCIDENT-FREE OPERATION, FOLLOW THESE GUIDELINES:

- OBSERVE ALL WARNINGS, PRECAUTIONS AND INSTRUCTIONS.
- REGULARLY INSPECT POWER AND USB CONNECTIONS.
- STOP USE AND DISCONNECT FROM ELECTRICAL OUTLET IMMEDIATELY IF POWER OR USB CONNECTION ARE
- DAMAGED OR IF DEVICE PRODUCES UNUSUAL SOUNDS OR SMELL OR BECOMES HOT TO THE TOUCH.

PRECAUTIONS

BEFORE USING THE PRODUCT, CAREFULLY READ THIS MANUAL AND RETAIN IT FOR FUTURE REFERENCE. IT IS IMPORTANT TO ENSURE THAT ALL USERS FOLLOW SAFETY PRECAUTIONS AND WARNINGS.

WARNINGS

THIS DEVICE IS ONLY FOR FLIGHT SIMULATION USE. NO OTHER USE IS RECOMMENDED.

THIS DEVICE IS FOR INDOOR USE ONLY. DO NOT EXPOSED TO MOISTURE, LIQUID OR HEAT.

THE DEVICE IS NOT A TOY. CHILDREN SHOULD NOT OPERATE IT WITHOUT ADULT SUPERVISION.

ELECTRIC SHOCK / FIRE HAZARD. USE ONLY THE POWER SUPPLY PROVIDED BY PRECISION FLIGHT CONTROLS.

MAKE SURE THAT THE DEVICE IS ON A FLAT STABLE SURFACE. FAILURE TO DO SO MAY RESULT IN THE DEVICE FALLING WHICH MAY RESULT IN BODILY INJURY, DEATH AND DAMAGE TO THE DEVICE.

DO NOT REMOVE THE COVER. OPERATION WITHOUT THE COVER MAY RESULT IN ELECTRIC SHOCK.

DO NOT ATTEMPT TO SERVICE THE DEVICE. REFER SERVICING TO QUALIFIED PERSONNEL ONLY.

DO NOT PLACE DEVICE ON SURFACES THAT ARE UNSTABLE, TILTED OR SUBJECT TO VIBRATION.

DO NOT PLACE THE SYSTEM IN AN AREA SUBJECT TO EXCESSIVE DUST OR CIGARETTE SMOKE. DUST BUILD-UP OR CIGARETTE SMOKE RESIDUE ON THE INTERNAL COMPONENTS MAY CAUSE THE SYSTEM TO MALFUNCTION.

2 | INTRODUCTION

CONGRATULATIONS ON YOUR PURCHASE OF THE PFC CIRRUS II DESKTOP FLIGHT CONSOLE!
THE CIRRUS II DESKTOP FLIGHT CONSOLE FEATURES TACTILE SWITCHES, ROBUST YOKE MECHANISM AND CASTED ALUMINUM YOKES.

THE YOKE MECHANISM FEATURES PRECISION BALL BEARINGS WITH SELF ALIGNING BUSHINGS THAT ENSURES SMOOTH AND REALISTIC FEEL THROUGH OUT THE CONTROL MOVEMENT. THE BEARINGS ARE MATCHED WITH A STEEL SHAFT THAT IS PRECISION GROUND AND POLISHED. IT IS ALSO EQUIPPED WITH STATE-OF-THE-ART HALL EFFECT SENSORS FOR PITCH AND ROLL INPUTS FOR LONG TERM FIDELITY.

DEFINITIONS AND ABBREVIATIONS

CIRRUS II: CIRRUS II DESKTOP FLIGHT CONSOLE

USB: UNIVERSAL SERIAL BUS (CONNECTION USED BY THE CIRRUS II TO THE COMPUTER)

COMPATIBILITY

THE CIRRUS II IS FULLY COMPATIBLE WITH X-PLANE 9.70. BETA DRIVERS MAY BE AVAILABLE FOR LATER VERSION OF X-PLANE. THE CIRRUS II CONSOLE IS NOT COMPATIBLE WITH FS9, FSX OR PREPAR3D OR PREPAR3D V4.

DIMENSIONS & WEIGHT

WIDTH: 28 IN. / 71.12 CM.

DEPTH: 16 IN. / 40.64 CM.

HEIGHT: 5 IN. / 12.70 CM.

WEIGHT: 35 LBS / 15.88 KG

PACKAGE CONTENTS

(1) CIRRUS II CONSOLE

(1) 6 FOOT USB CABLE

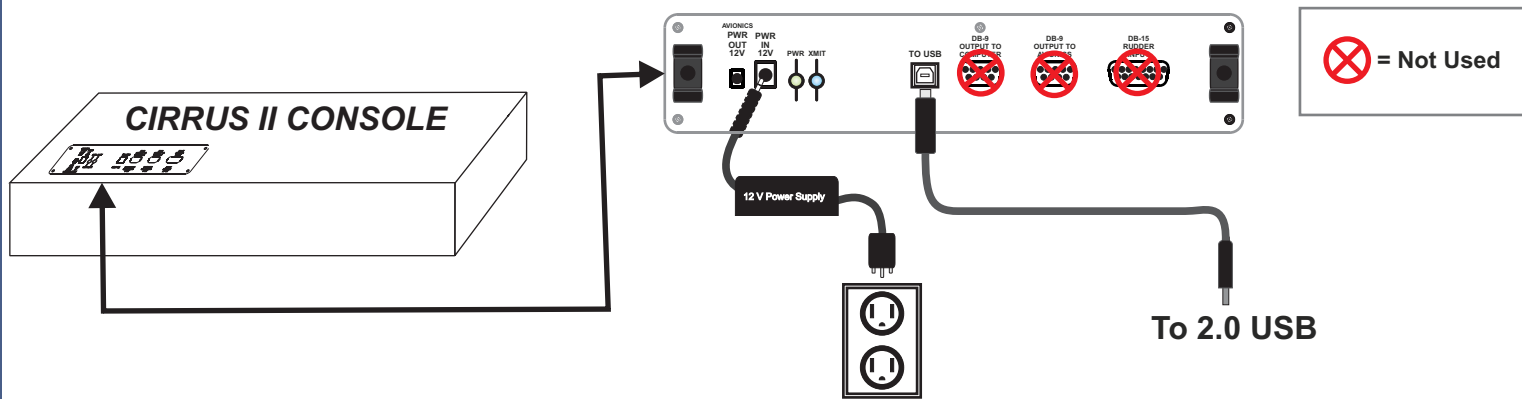
(1) USER'S GUIDE

(1) 12 VOLT DC POWER SUPPLY

3 | INSTALLATION

1. CHECK PACKAGING FOR DAMAGE. DO NOT UNPACK ITEM IF THERE ARE ANY DAMAGE. REPORT ANY DAMAGE TO THE CARRIER AND PFC TECHNICAL SUPPORT. TAKE CLEAR PICTURE OF ANY DAMAGE AND EMAIL THE PICTURES TO techsupport@flypfc.com.
2. IF CIRRUS II IS UNDAMAGED. CAREFULLY LIFT THE CIRRUS II OUT OF THE BOX.
3. SET THE CIRRUS II ONTO YOUR DESK.
4. CONNECT THE USB CABLE ON THE BACK OF THE CIRRUS II.
5. CONNECT THE POWER TO THE BACK OF THE CIRRUS II.
6. CONNECT THE POWER TO ELECTRICAL SOCKET.
7. CONNECT THE USB CABLE TO AN OPEN USB 2.0 PORT ON BACK OF THE COMPUTER.
8. PROCEED TO THE NEXT PAGE TO INSTALL THE USBHIDPLUGIN FOR X-PLANE 9.70

CIRRUS II CONSOLE CONNECTION DIAGRAM



4 | INSTALLATION OF PFCUSBHID PLUGIN FOR X-PLANE

THE PFC USBHID PLUGIN, IS THE SOFTWARE THAT MAKES THE USB DEVICES MANUFACTURED BY PRECISION FLIGHT CONTROLS, INC WORK WITH X-PLANE 9.70. THIS GUIDE ASSUMES THAT YOU HAVE PROPERLY INSTALLED THE X-PLANE 9.70 AND THAT YOU HAVE RUN IT AT LEAST ONCE. IF YOU HAVE NOT, PLEASE REFER TO YOUR SOFTWARE MANUAL FOR SOFTWARE INSTALLATION.

PFCUSBHID INSTALLATION STEPS

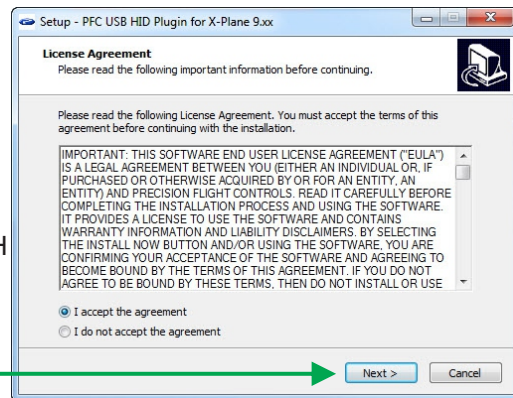
1. GO TO <https://flypfc.com/support/#usbdriverutils>
2. CLICK ON DOWNLOAD PFC USB HID PLUGIN FOR X-PLANE 9.70
3. SELECT THE DESKTOP AS YOUR DOWNLOAD DESTINATION.
4. UNZIP THE PFCUSBHIDPLUGIN-XPLANE970.ZIP FILE.



5. DOUBLE CLICK ON THE PFCUSBHID_PLUGIN_XP9.XX_XXXX.EXE

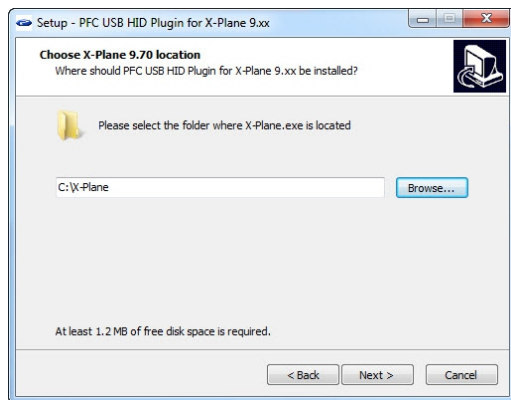


6. READ THE LICENSE AGREEMENT AND CLICK ON NEXT IF YOU AGREE WITH THE TERMS.

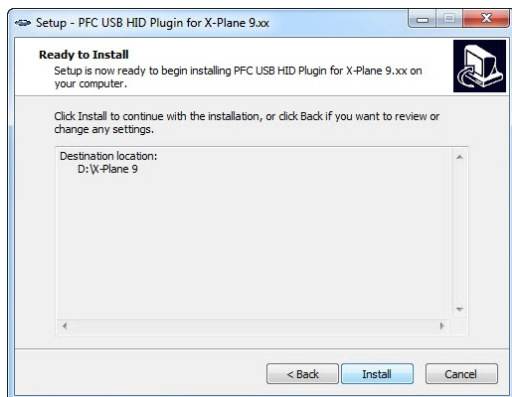


CONTINUED ON NEXT PAGE

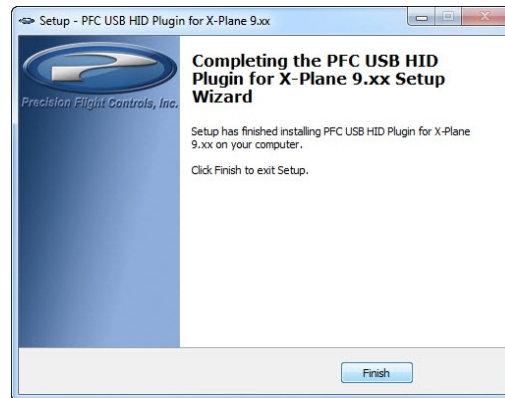
7. AFTER SELECTING THE FOLDER, CLICK ON NEXT.



8. CLICK ON INSTALL IN THIS WINDOW



9. NOW CLICK ON FINISH.



10. INSTALLATION OF PLUGIN IS COMPLETE, YOU MAY NOW START X-PLANE 9.70.

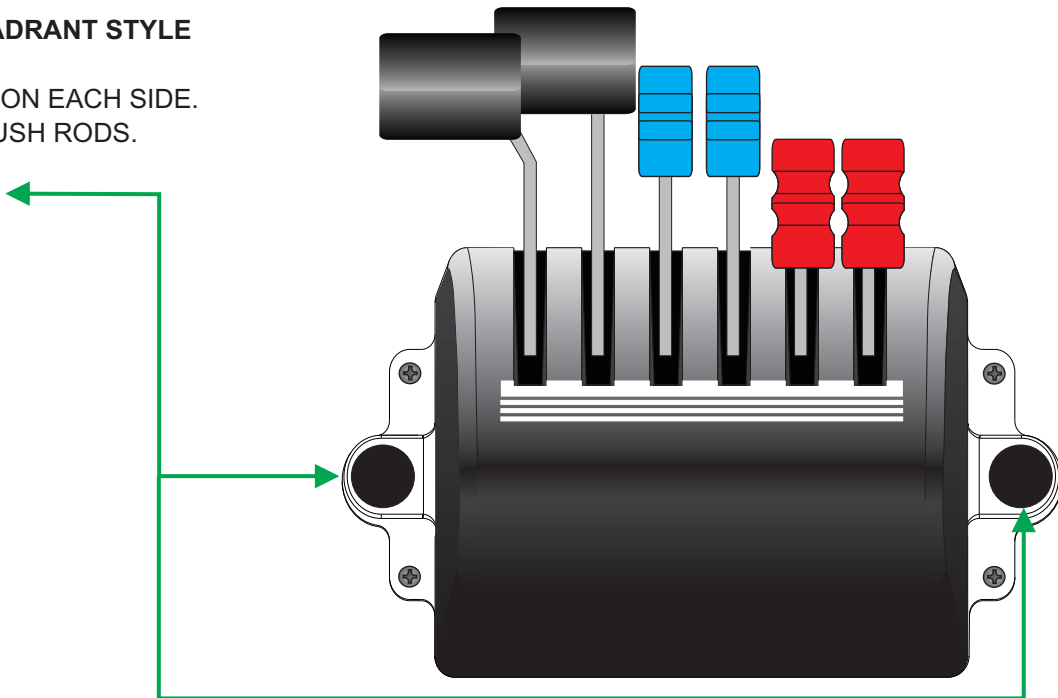


5 | SWITCHING QUADRANTS

THERE ARE 2 MAIN STYLES OF POWER CONTROL FOR THE C2PRO. THE QUADRANT STYLE AND VERNIER STYLE. PFC MANUFACTURES DIFFERENT QUADRANTS AND VERNIER CONTROLS FOR PISTON SINGLE AND TWIN, SINGLE AND TWIN TURBO PROP, ONE, TWO, THREE AND FOUR ENGINE JETS.

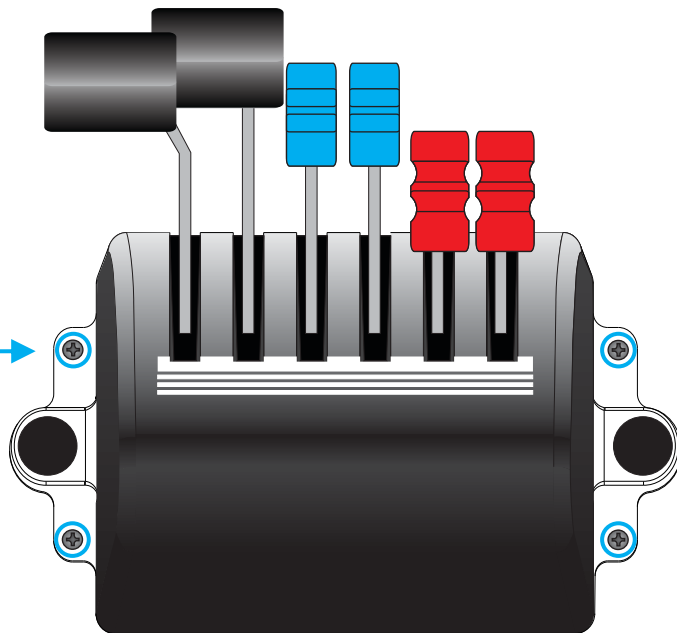
SWITCHING TO STANDARD QUADRANT STYLE

1. PULL ALL THE LEVERS BACK.
2. REMOVE THE THUMBSCREW ON EACH SIDE.
3. ALIGN NEW QUADRANT TO PUSH RODS.
4. REINSTALL THUMBSCREWS.



6 | SWITCHING TO VERNIER CONTROLS

1. INSTALL A TWIN NON-VERNIER QUADRANT. (SEE SECTION 5 FOR STEPS)
2. REMOVE THE FOUR (4) SCREWS AROUND THE PANEL. ←
3. CAREFULLY PULL THE ASSEMBLY OUT.
4. DISCONNECT THE RJ-45 CABLE.
5. CONNECT THE RJ-45 CABLE TO THE VERNIER UNIT.
6. CAREFULLY INSERT AND THEN ALIGN THE SCREW HOLES.
7. SECURE THE UNIT WITH THE SCREWS.
8. STORE THE NON VERNIER UNIT IN A SAFE PLACE.



7 | USBHIDPLUGIN OPTIONS

THE USBHIDPLUGIN HAVE USER CONFIGURABLE OPTIONS. THE OPTIONS LISTED BELOW WORKS WITH CIRRUS II.

ALT AIR SWITCH

CHANGE ALT AIR FUNCTION FROM ALTERNATE STATIC SOURCE TO ALTERNATE ENGINE AIR SOURCE.

PILOT YOKE BUTTON

CHANGES THE AUTOPILOT BUTTON ON THE YOKE FROM AUTOPILOT DISCONNECT TO PUSH TO TALK BUTTON.

PFC STANDARD THROTTLE QUADRANT

CHANGES THE OUTPUT OF THE QUADRANT BASED ON THE QUADRANT STYLE SELECTED. THE SELECTION SHOULD MATCH THE QUADRANT OR VERNIER INSTALLED ON YOUR CIRRUS II CONSOLE.

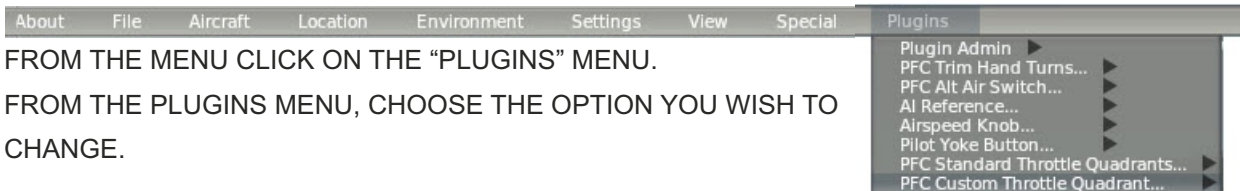
ACCESSING THE USBHIDPLUGIN MENU

TO CHANGE ANY OF THE OPTIONS OF THE USBHIDPLUGIN, YOU MUST FIRST ACCESS THE USBHIDPLUGIN MENU.

1. WITH X-PLANE RUNNING, ACCESS THE X-PLANE MENU BY MOVING YOUR MOUSE TO THE TOP OF THE SCREEN.

2. FROM THE MENU CLICK ON THE “PLUGINS” MENU.

3. FROM THE PLUGINS MENU, CHOOSE THE OPTION YOU WISH TO CHANGE.

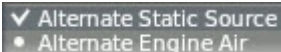


PFC ALT AIR SWITCH

THE PFC ALT AIR SWITCH CAN BE CHANGED BETWEEN ALTERNATE STATIC SOURCE OR ALTERNATE ENGINE AIR SOURCE.

TO CHANGE IT :

1. FROM THE PLUGINS MENU CHOOSE “PFC ALT AIR SWITCH”
2. FROM THE SELECTION WINDOW, CHOOSE THE OPTION YOU PREFER.



▼ Alternate Static Source
• Alternate Engine Air

PILOT YOKE BUTTON

THE PILOT YOKE BUTTON REFERS TO THE AUTOPILOT DISCONNECT BUTTON ON THE YOKE. THIS OPTION CHANGES THE FUNCTION BETWEEN AUTOPILOT DISCONNECT OR PUSH TO TALK.

TO CHANGE IT:

1. FROM THE PLUGINS CHOOSE “PILOT YOKE BUTTON.”
2. FROM THE SELECTION WINDOW CHOOSE YOUR PREFERRED OPTION.



▼ Autopilot Disconnect
• Push-to-Talk

PFC STANDARD THROTTLE QUADRANTS

THE CIRRUS II CAN BE MATED WITH ANY OF THE PISTON, TURBO PROP AND JET QUADRANTS AS WELL AS ANY OF THE VERNIER STYLE CONTROLS THAT PFC MANUFACTURES.

THE PFC STANDARD THROTTLE QUADRANT OPTION WILL ALLOW YOU TO CHANGE THE PLUGIN SETTING TO MATCH THE QUADRANT OR VERNIER CONTROL YOU HAVE INSTALLED ON THE CONSOLE.

TO CHANGE IT:

1. FROM THE PLUGINS CHOOSE "PFC STANDARD THROTTLE QUADRANTS."
2. FROM THE SELECTION WINDOW CHOOSE YOUR PREFERRED OPTION.

Single-Engine (Standard or Vernier):	
<input type="radio"/>	Fuel-injected
<input type="radio"/>	Carbureted
<input checked="" type="radio"/>	High-Performance (Throttle/Prop/Mixture)
<input type="radio"/>	High-Performance (Mixture/Throttle/Prop)
Multi-Engine:	
<input type="radio"/>	Throttle/Prop/Mixture
<input type="radio"/>	Prop/Throttle/Mixture
Turboprop:	
<input type="radio"/>	Single
<input type="radio"/>	PC-12
<input type="radio"/>	Caravan
<input type="radio"/>	Twin
Jet:	
<input type="radio"/>	Jet Enhanced
<input type="radio"/>	Two-engine
<input type="radio"/>	Three-engine
<input type="radio"/>	Four-engine
<input type="radio"/>	CUSTOM

8 | LIMITED WARRANTY INFORMATION

WHAT IS COVERED BY THIS LIMITED WARRANTY:

PRECISION FLIGHT CONTROLS, INC. (HEREAFTER "PFC") WARRANTS ITS HARDWARE PRODUCTS TO THE ORIGINAL OWNER TO BE FREE FROM DEFECTS IN WORKMANSHIP AND MATERIALS WHEN USED NORMALLY FOR A PERIOD OF ONE (1) YEAR FROM THE DATE OF SHIPMENT.

WHAT IS NOT COVERED BY THIS LIMITED WARRANTY:

THE LIMITED WARRANTY DOES NOT APPLY TO:

- **PRODUCT FAILURE DUE TO IMPROPER** INSTALLATION, MAINTENANCE, MISUSE, ACCIDENT, ABUSE, NEGLIGENCE, UNAUTHORIZED REPAIR, MODIFICATION OR ALTERATION.
- **REMOVAL OR REPLACEMENT COSTS.**
- **COSTS OR LOSS OF REVENUE INCURRED DUE TO DOWNTIME.**
- **DAMAGE TO RELATED COMPONENTS.**
- **NORMAL WEAR-AND-TEAR.**
- **DAMAGE INCURRED DURING SHIPPING.**
- **PRODUCTS MANUFACTURED BY OTHER COMPANIES.**
- **SOFTWARE OR DATA LOSS.**
- **COSMETIC DAMAGES SUCH AS CARPET, UPHOLSTERY, PAINT, POWDER COAT, STICKERS, WRAPS, SILK SCREEN OR ANY OTHER DAMAGES THAT DO NOT DIRECTLY IMPACT THE USE OF THE PRODUCT IN ITS INTENDED ROLE AS A AVIATION TRAINING DEVICE.**
- **EXPENDABLE ITEMS SUCH AS LIGHT BULBS, BATTERIES AND ETC.**
- **LANDING GEAR SWITCH**

WHAT WILL PFC DO IN THE EVENT OF A WARRANTY CLAIM:

IF DURING THE WARRANTY A WARRANTY CLAIM IS MADE, PFC WILL AT ITS OPTION:

- **REPAIR THE PRODUCT USING NEW OR PARTS THAT ARE FUNCTIONALLY EQUIVALENT TO NEW IN PERFORMANCE AND RELIABILITY.**
- **REPLACE THE PRODUCT USING NEW OR PRODUCTS THAT ARE FUNCTIONALLY EQUIVALENT TO NEW IN PERFORMANCE AND RELIABILITY.**

CONTINUED ON NEXT PAGE

WHAT WILL PFC DO IN THE EVENT OF A WARRANTY CLAIM (CONTINUED):

- REFUND YOU FOR THE PURCHASE PRICE MINUS THE FIFTEEN (15) PERCENT RESTOCKING FEE

OBTAINING WARRANTY SERVICE:

ALL WARRANTY QUESTIONS OR CLAIMS MUST FIRST BE DIRECTED TO THE PFC TECHNICAL SUPPORT TEAM. PLEASE BE PREPARED TO PROVIDE THE PFC SERIAL NUMBER AND/OR PURCHASE INVOICE NUMBER FOR VERIFICATION. PFC TECHNICAL SUPPORT DEPARTMENT MAY BE REACHED BY:

PHONE: (916) 414-1316; EMAIL: techsupport@flypfc.com OR SKYPE: PFC_TECHSUPPORT

PFC WILL DETERMINE IF THAT THE PRODUCT HAS FAILED DUE TO DEFECTIVE WORKMANSHIP OR MATERIALS. PFC RESERVES THE RIGHT TO ASSESS FEES ASSOCIATED WITH PROBLEM DIAGNOSIS. IF THE PRODUCT IS DETERMINED TO HAVE A WARRANTABLE PROBLEM YOU MAY CHOOSE ONE OF SERVICE OPTIONS BELOW.

WARRANTY SERVICE OPTIONS:

MAIL IN SERVICE

THIS SERVICE WILL REQUIRE THE OWNER TO SEND THE DEFECTIVE PRODUCT OR PART TO PFC. THE OWNER MUST FOLLOW ALL THE RETURN MATERIAL AUTHORIZATION (RMA) PROCEDURE PRIOR TO RETURNING ANY PACKAGE TO PFC. PACKAGES SENT NOT ADHERING TO THE RMA PROCEDURE WILL NOT BE ACCEPTED. THE RMA PROCEDURE CAN BE FOUND HERE: https://flypfc.com/wp-content/uploads/support/RMA_Form.pdf

ADVANCED REPLACEMENT PART SERVICE

THIS REPLACEMENT PART SERVICE ALLOWS YOU TO SERVICE YOUR OWN PFC PRODUCT. PFC WILL SEND YOU THE REPLACEMENT PART AND YOU WILL PERFORM THE INSTALLATION OF THE PART YOURSELF. PFC WILL REQUIRE A CREDIT CARD TO CHARGE THE RETAIL PRICE OF THE REPLACEMENT PART AND SHIPPING. THE REPLACED PART MUST BE RETURNED TO PFC VIA A REPUTABLE SHIPPING SERVICE WITHIN 10 BUSINESS DAYS. IF YOU FAIL TO RETURN THE REPLACED PART WITHIN THE 10 BUSINESS DAYS NO REFUNDS WILL BE GIVEN.

CONTINUED ON NEXT PAGE

WARRANTY SERVICE OPTIONS (CONTINUED):

ON-SITE REPAIR SERVICE

THIS SERVICE IS ONLY AVAILABLE FOR ADVANCED AVIATION TRAINING DEVICE OR OTHERWISE PERMANENTLY INSTALLED SYSTEMS. PFC, SCHEDULE PERMITTING, WILL SEND A TECHNICIAN TO YOUR LOCATION TO SERVICE YOUR PRODUCT. AFTER THE FIRST 100 DAYS FROM THE DATE OF SHIPMENT THE CUSTOMER WILL BE RESPONSIBLE FOR ALL EXPENSES AND LABOR COST FOR THE ON-SITE SERVICE.

RETURN SHIPMENT OPTIONS:

PFC AT ITS EXPENSE WILL SHIP THE REPAIRED OR REPLACEMENT PRODUCT ONLY TO THE SAME COUNTRY OF ORIGINAL SHIPMENT. PFC WILL ONLY USE UPS GROUND OR SIMILAR SERVICE. IF EXPEDITED SHIPPING IS DESIRED, THE CUSTOMER IS RESPONSIBLE FOR ALL SHIPPING COST.

COUNTRY OF ORIGINAL SHIPMENT

THE COUNTRY OF ORIGINAL SHIPMENT IS THE COUNTRY WHERE THE ORIGINAL ITEM WAS SHIPPED BY PFC DURING THE ORIGINAL PURCHASE. I.E. CUSTOMER PURCHASES A PRODUCT FROM PFC HAVE IT SHIPPED TO COUNTRY (X); CUSTOMER THEN TRANSPORTED THE PRODUCT TO COUNTRY (Z), PFC WILL SHIP THE REPLACEMENT PART ONLY TO COUNTRY (X). THE CUSTOMER IS RESPONSIBLE TO GET THE REPLACEMENT PART TO THE LOCATION OF THE PRODUCT.

IMPLIED WARRANTY:

THIS PFC HARDWARE PRODUCT WARRANTY IS IN LIEU OF ALL OTHER WARRANTIES AND/OR REPRESENTATIONS EXPRESSED OR IMPLIED, INCLUDING, WITHOUT LIMITATIONS, WARRANTIES OF MERCHANTABILITY AND FITNESS FOR PURPOSE, AND ALL OTHER LIABILITIES, INCLUDING SPECIAL OR CONSEQUENTIAL DAMAGES, IN CONNECTION WITH THE SALE OR USE OF ANY PFC PRODUCT. ANY WARRANTIES IMPLIED BY LAW ARE LIMITED IN DURATION TO THE DURATION OF THIS WARRANTY, EXCEPT THOSE STATES WHERE PROHIBITED BY LAW.

