



PRECISION
FLIGHT CONTROLS

CIRRUS II DESKTOP FLIGHT CONSOLE SETUP AND OPERATIONS GUIDE



CONTENTS

1 PRECAUTIONS AND WARNINGS

2 INTRODUCTION

3 SET UP AND CONNECTION

4 INSTALLATION OF PFCUSBHID PLUGIN FOR X-PLANE 9.70

5 SWITCHING QUADRANTS

6 SWITCHING TO VERNIER CONTROLS

7 USBHIDPLUGIN OPTIONS

8 LIMITED WARRANTY INFORMATION

1 | PRECAUTIONS & WARNINGS

SAFETY

THIS PRODUCT HAS BEEN DESIGNED WITH CONCERN FOR SAFETY. HOWEVER, ANY ELECTRICAL DEVICE, IF USED IMPROPERLY, HAS THE POTENTIAL FOR CAUSING FIRE, ELECTRICAL SHOCK OR PERSONAL INJURY.

TO HELP ENSURE ACCIDENT-FREE OPERATION, FOLLOW THESE GUIDELINES:

- OBSERVE ALL WARNINGS, PRECAUTIONS AND INSTRUCTIONS.
- REGULARLY INSPECT POWER AND USB CONNECTIONS.
- STOP USE AND DISCONNECT FROM ELECTRICAL OUTLET IMMEDIATELY IF POWER OR USB CONNECTION ARE
- DAMAGED OR IF DEVICE PRODUCES UNUSUAL SOUNDS OR SMELL OR BECOMES HOT TO THE TOUCH.

PRECAUTIONS

BEFORE USING THE PRODUCT, CAREFULLY READ THIS MANUAL AND RETAIN IT FOR FUTURE REFERENCE. IT IS IMPORTANT TO ENSURE THAT ALL USERS FOLLOW SAFETY PRECAUTIONS AND WARNINGS.

WARNINGS

THIS DEVICE IS ONLY FOR FLIGHT SIMULATION USE. NO OTHER USE IS RECOMMENDED.

THIS DEVICE IS FOR INDOOR USE ONLY. DO NOT EXPOSED TO MOISTURE, LIQUID OR HEAT.

THE DEVICE IS NOT A TOY. CHILDREN SHOULD NOT OPERATE IT WITHOUT ADULT SUPERVISION.

ELECTRIC SHOCK / FIRE HAZARD. USE ONLY THE POWER SUPPLY PROVIDED BY PRECISION FLIGHT CONTROLS.

MAKE SURE THAT THE DEVICE IS ON A FLAT STABLE SURFACE. FAILURE TO SO MAY RESULT IN THE DEVICE FALLING WHICH MAY RESULT BODILY INJURY, DEATH AND DAMAGE TO THE DEVICE.

DO NOT REMOVE THE COVER. OPERATION WITHOUT THE COVER MAY RESULT IN ELECTRIC SHOCK.

DO NOT ATTEMPT TO SERVICE THE DEVICE. REFER SERVICING TO QUALIFIED PERSONNEL ONLY.

DO NOT PLACE DEVICE ON SURFACES THAT ARE UNSTABLE, TILTED OR SUBJECT TO VIBRATION.

DO NOT PLACE THE SYSTEM IN AN AREA SUBJECT TO EXCESSIVE DUST OR CIGARETTE SMOKE. DUST BUILD-UP OR CIGARETTE SMOKE RESIDUE ON THE INTERNAL COMPONENTS MAY CAUSE THE SYSTEM TO MALFUNCTION.

2 | INTRODUCTION

CONGRATULATIONS ON YOUR PURCHASE OF THE PFC CIRRUS II DESKTOP FLIGHT CONSOLE!
THE CIRRUS II DESKTOP FLIGHT CONSOLE FEATURES TACTILE SWITCHES, ROBUST YOKE MECHANISM AND CASTED ALUMINUM YOKES.

THE YOKE MECHANISM FEATURES PRECISION BALL BEARINGS WITH SELF ALIGNING BUSHINGS THAT ENSURES SMOOTH AND REALISTIC FEEL THROUGH OUT THE CONTROL MOVEMENT. THE BEARINGS ARE MATCHED WITH A STEEL SHAFT THAT IS PRECISION GROUND AND POLISHED. IT IS ALSO EQUIPPED WITH STATE-OF-THE-ART HALL EFFECT SENSORS FOR PITCH AND ROLL INPUTS FOR LONG TERM FIDELITY.

DEFINITIONS AND ABBREVIATIONS

CIRRUS II: CIRRUS II DESKTOP FLIGHT CONSOLE

USB: UNIVERSAL SERIAL BUS (CONNECTION USED BY THE CIRRUS II TO THE COMPUTER)

COMPATIBILITY

THE CIRRUS II IS FULLY COMPATIBLE WITH X-PLANE 9.70. BETA DRIVERS MAY BE AVAILABLE FOR LATER VERSION OF X-PLANE. THE CIRRUS II CONSOLE IS NOT COMPATIBLE WITH FS9, FSX OR PREPAR3D OR PREPAR3D V4.

DIMENSIONS & WEIGHT

WIDTH	DEPTH	HEIGHT	WEIGHT
28 IN. / 71.12 cm.	16 IN. / 40.64 cm.	5 IN. / 12.70 cm.	35 lbs / 15.88 kg

PACKAGE CONTENTS

- (1) CIRRUS II CONSOLE
- (2) 6 FOOT USB CABLE
- (1) 12 VOLT DC POWER SUPPLY FOR CIRRUS II CONSOLE
- (1) 24 VOLT DC POWER SUPPLY FOR CONTROL LOADING YOKE
- (1) USER'S GUIDE

3 | SET UP AND CONNECTION

1. CHECK PACKAGING FOR DAMAGE. DO NOT UNPACK ITEM IF THERE ARE ANY DAMAGE. REPORT ANY DAMAGE TO THE CARRIER AND PFC TECHNICAL SUPPORT. TAKE CLEAR PICTURE OF ANY DAMAGE AND EMAIL THE PICTURES TO techsupport@flypfc.com.
2. IF CIRRUS II IS UNDAMAGED. CAREFULLY LIFT THE CIRRUS II OUT OF THE BOX.
3. SET THE CIRRUS II ONTO YOUR DESK.
4. CONNECT ONE USB CABLE ON THE TOP-BACK-LEFT OF THE CIRRUS II.
5. CONNECT THE 12V DC POWER SUPPLY TO THE BACK OF THE CIRRUS II.
6. CONNECT ONE USB CABLE ON THE BACK-RIGHT OF THE CIRRUS II.
7. CONNECT THE 24V DC POWER TO THE BACK-RIGHT OF THE CIRRUS II.
8. CONNECT THE POWER CABLE TO EACH POWER SUPPLY AND TO AC SOCKET
9. CONNECT THE USB CABLES TO AN OPEN USB 2.0 PORT ON BACK OF YOUR COMPUTER.
10. PROCEED TO THE NEXT PAGE TO INSTALL THE USBHIDPLUGIN FOR X-PLANE 9.70.



4 | SOFTWARE INSTALLATION

THE CIRRUS II CONSOLE REQUIRES TWO SOFTWARE FOR PROPER OPERATION. THE SWITCHES ON THE CIRRUS II CONSOLE WORKS WITH X-PLANE BY INSTALLING THE PFC USBHIDPLUGIN. THIS GUIDE ASSUMES THAT YOU HAVE PROPERLY INSTALLED THE X-PLANE AND THAT YOU HAVE RUN IT AT LEAST ONCE PRIOR TO INSTALLATION OF THE PLUGIN. IF YOU HAVE NOT, PLEASE REFER TO YOUR X-PLANE MANUAL FOR PROPER SOFTWARE INSTALLATION.

THE OTHER SOFTWARE THAT IS REQUIRED IS THE CLS2SIM. THIS CONNECTS THE FORCE FEEDBACK CONTROLS TO X-PLANE. THE INSTALLATION AND CONFIGURATION GUIDE FOR CLS2SIM CAN BE FOUND IN THE MEMORY STICK YOU HAVE RECEIVED WITH THE CONSOLE. PLEASE SEE FILE NAME: *CLS2SIM-INSTALL-CONFIGURATION.PDF*

PFCUSBHID INSTALLATION STEPS

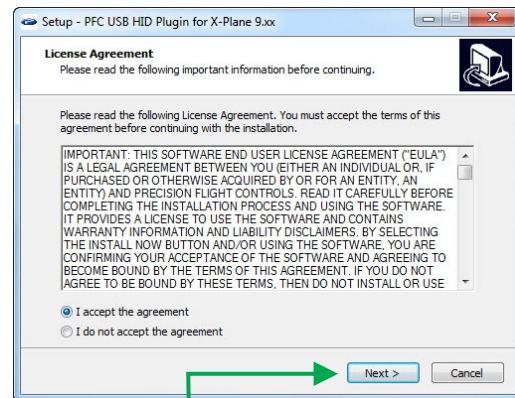
1. GO TO <https://flypfc.com/support/> AND DOWNLOAD THE PFC USBHIDPLUGIN FOR X-PLANE 9.70
2. SELECT THE DESKTOP AS YOUR DOWNLOAD DESTINATION.
3. UNZIP THE PFCUSBHIDPLUGIN-XPLANE970.ZIP FILE.



5. DOUBLE CLICK ON THE PFCUSBHID_PLUGIN_XP9.XX_XXXX.EXE

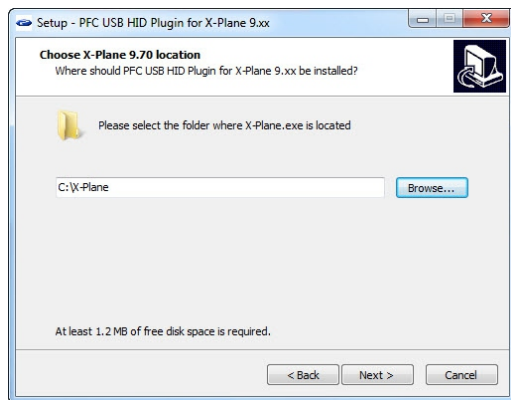


6. READ THE LICENSE AGREEMENT AND CLICK ON NEXT IF YOU AGREE WITH THE TERMS. _____

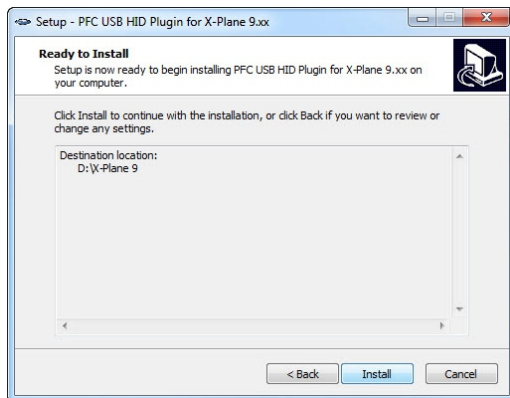


CONTINUED ON NEXT PAGE

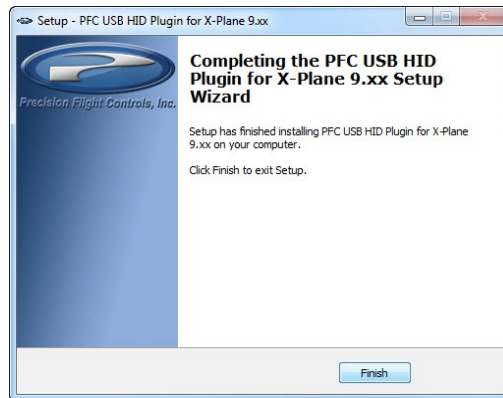
7. AFTER SELECTING THE FOLDER, CLICK ON NEXT.



8. CLICK ON INSTALL IN THIS WINDOW



9. NOW CLICK ON FINISH.

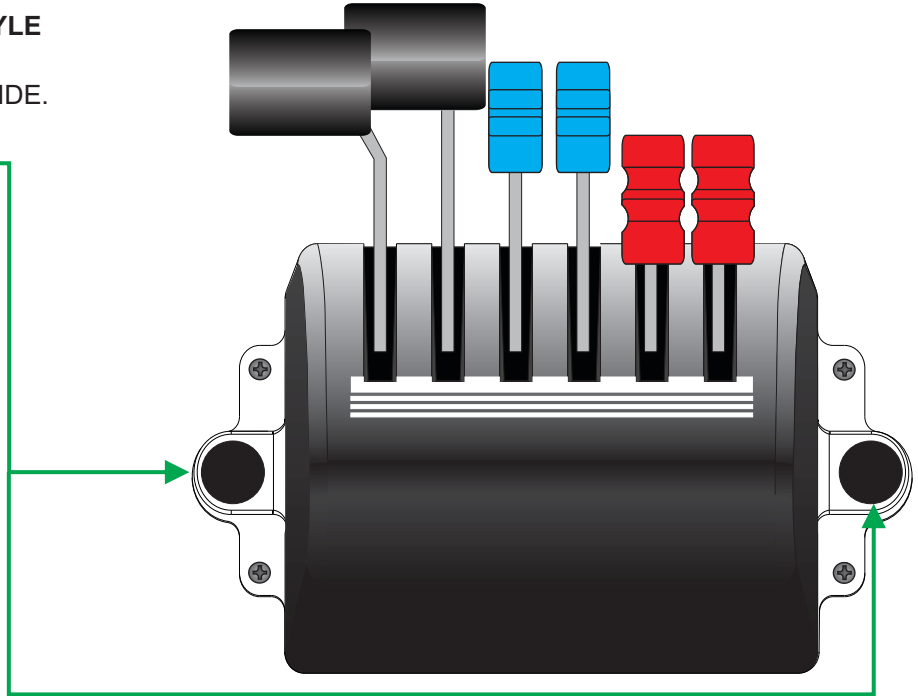


5 | SWITCHING QUADRANTS

THERE ARE 2 MAIN STYLES OF POWER CONTROL FOR THE C2PRO. THE QUADRANT STYLE AND VERNIER STYLE. PFC MANUFACTURES DIFFERENT QUADRANTS AND VERNIER CONTROLS FOR PISTON SINGLE AND TWIN, SINGLE AND TWIN TURBO PROP, ONE, TWO, THREE AND FOUR ENGINE JETS.

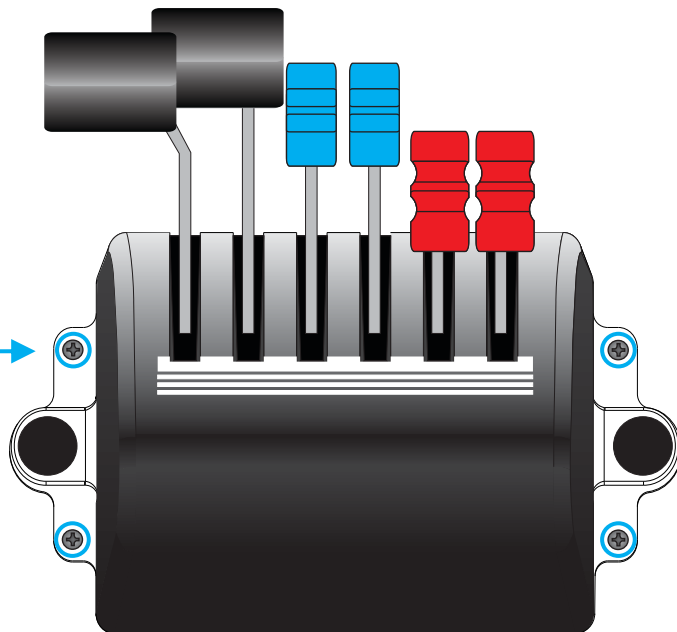
SWITCHING TO STANDARD QUADRANT STYLE

1. PULL ALL THE LEVERS BACK.
2. REMOVE THE THUMBSCREW ON EACH SIDE.
3. ALIGN NEW QUADRANT TO PUSH RODS.
4. REINSTALL THUMBSCREWS. ←



6 | SWITCHING TO VERNIER CONTROLS

1. INSTALL A TWIN NON-VERNIER QUADRANT. (SEE SECTION 5 FOR STEPS)
2. REMOVE THE FOUR (4) SCREWS AROUND THE PANEL. ←
3. CAREFULLY PULL THE ASSEMBLY OUT.
4. DISCONNECT THE RJ-45 CABLE.
5. CONNECT THE RJ-45 CABLE TO THE VERNIER UNIT.
6. CAREFULLY INSERT AND THEN ALIGN THE SCREW HOLES.
7. SECURE THE UNIT WITH THE SCREWS.
8. STORE THE NON VERNIER UNIT IN A SAFE PLACE.



7 | USBHIDPLUGIN OPTIONS

THE USBHIDPLUGIN HAVE USER CONFIGURABLE OPTIONS. THE OPTIONS LISTED BELOW WORKS WITH CIRRUS II.

ALT AIR SWITCH

CHANGE ALT AIR FUNCTION FROM ALTERNATE STATIC SOURCE TO ALTERNATE ENGINE AIR SOURCE.

PILOT YOKE BUTTON

CHANGES THE AUTOPILOT BUTTON ON THE YOKE FROM AUTOPILOT DISCONNECT TO PUSH TO TALK BUTTON.

PFC STANDARD THROTTLE QUADRANT

CHANGES THE OUTPUT OF THE QUADRANT BASED ON THE QUADRANT STYLE SELECTED. THE SELECTION SHOULD MATCH THE QUADRANT OR VERNIER INSTALLED ON YOUR CIRRUS II CONSOLE.

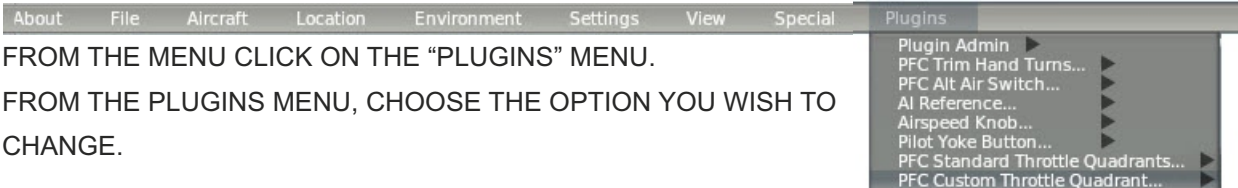
ACCESSING THE USBHIDPLUGIN MENU

TO CHANGE ANY OF THE OPTIONS OF THE USBHIDPLUGIN, YOU MUST FIRST ACCESS THE USBHIDPLUGIN MENU.

1. WITH X-PLANE RUNNING, ACCESS THE X-PLANE MENU BY MOVING YOUR MOUSE TO THE TOP OF THE SCREEN.

2. FROM THE MENU CLICK ON THE “PLUGINS” MENU.

3. FROM THE PLUGINS MENU, CHOOSE THE OPTION YOU WISH TO CHANGE.

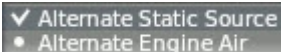


PFC ALT AIR SWITCH

THE PFC ALT AIR SWITCH CAN BE CHANGED BETWEEN ALTERNATE STATIC SOURCE OR ALTERNATE ENGINE AIR SOURCE.

TO CHANGE IT :

1. FROM THE PLUGINS MENU CHOOSE “PFC ALT AIR SWITCH”
2. FROM THE SELECTION WINDOW, CHOOSE THE OPTION YOU PREFER.

A screenshot of a software window titled "PFC ALT AIR SWITCH". It contains two options: "Alternate Static Source" which is selected with a checkmark, and "Alternate Engine Air" which is unselected with a radio button.

✓ Alternate Static Source
• Alternate Engine Air

PILOT YOKE BUTTON

THE PILOT YOKE BUTTON REFERS TO THE AUTOPILOT DISCONNECT BUTTON ON THE YOKE. THIS OPTION CHANGES THE FUNCTION BETWEEN AUTOPILOT DISCONNECT OR PUSH TO TALK.

TO CHANGE IT:

1. FROM THE PLUGINS CHOOSE “PILOT YOKE BUTTON.”
2. FROM THE SELECTION WINDOW CHOOSE YOUR PREFERRED OPTION.

A screenshot of a software window titled "PILOT YOKE BUTTON". It contains two options: "Autopilot Disconnect" which is selected with a checkmark, and "Push-to-Talk" which is unselected with a radio button.

✓ Autopilot Disconnect
• Push-to-Talk

PFC STANDARD THROTTLE QUADRANTS

THE CIRRUS II CAN BE MATED WITH ANY OF THE PISTON, TURBO PROP AND JET QUADRANTS AS WELL AS ANY OF THE VERNIER STYLE CONTROLS THAT PFC MANUFACTURES.

THE PFC STANDARD THROTTLE QUADRANT OPTION WILL ALLOW YOU TO CHANGE THE PLUGIN SETTING TO MATCH THE QUADRANT OR VERNIER CONTROL YOU HAVE INSTALLED ON THE CONSOLE.

TO CHANGE IT:

1. FROM THE PLUGINS CHOOSE "PFC STANDARD THROTTLE QUADRANTS."
2. FROM THE SELECTION WINDOW CHOOSE THE OPTION THAT MATCHES THE QUADRANT YOU HAVE INSTALLED.

Single-Engine (Standard or Vernier):	
<input type="radio"/>	Fuel-injected
<input type="radio"/>	Carbureted
<input checked="" type="radio"/>	High-Performance (Throttle/Prop/Mixture)
<input type="radio"/>	High-Performance (Mixture/Throttle/Prop)
Multi-Engine:	
<input type="radio"/>	Throttle/Prop/Mixture
<input type="radio"/>	Prop/Throttle/Mixture
Turboprop:	
<input type="radio"/>	Single
<input type="radio"/>	PC-12
<input type="radio"/>	Caravan
<input type="radio"/>	Twin
Jet:	
<input type="radio"/>	Jet Enhanced
<input type="radio"/>	Two-engine
<input type="radio"/>	Three-engine
<input type="radio"/>	Four-engine
<input type="radio"/>	CUSTOM

PFC STANDARD THROTTLE QUADRANTS CONTINUED

3. TO DOUBLE CHECK THE SELECTION, GO BACK TO THE PLUGINS MENU AND CHOOSE “PFC STANDARD THROTTLE QUADRANTS.”
4. FROM THE SELECTION WINDOW YOU SHOULD SEE THE CHECKMARK ON THE QUADRANT YOU SELECTED.

NOTE: THE QUADRANT SELECT SHOULD ALWAYS MATCH THE LEVER YOU HAVE INSTALLED AND NOT THE AIRCRAFT MODEL

8 | LIMITED WARRANTY INFORMATION

WHAT'S COVERED BY OUR LIMITED WARRANTY

PRECISION FLIGHT CONTROLS, INC. (HEREAFTER "PFC") WARRANTS ITS HARDWARE PRODUCTS TO THE ORIGINAL OWNER TO BE FREE FROM DEFECTS IN WORKMANSHIP AND MATERIALS WHEN USED PROPERLY FOR A PERIOD OF ONE (1) YEAR FROM THE DATE OF DELIVERY.

- PRODUCT FAILURE DUE TO IMPROPER INSTALLATION, MAINTENANCE, MISUSE, ACCIDENT, ABUSE, NEGLIGENCE, UNAUTHORIZED REPAIR, MODIFICATION OR ALTERATION.
- REMOVAL OR REPLACEMENT COSTS.
- COSTS OR LOSS OF REVENUE INCURRED DUE TO DOWNTIME.
- DAMAGE TO RELATED COMPONENTS.
- NORMAL WEAR-AND-TEAR.
- DAMAGE INCURRED DURING SHIPPING.
- PRODUCTS MANUFACTURED BY OTHER COMPANIES.
- SOFTWARE OR DATA LOSS.
- COSMETIC DAMAGES SUCH AS CARPET, UPHOLSTERY, PAINT, POWDER COAT, STICKERS, WRAPS, SILK SCREEN OR ANY OTHER DAMAGES THAT DO NOT DIRECTLY IMPACT THE USE OF THE PRODUCT IN ITS INTENDED ROLE AS A AVIATION TRAINING DEVICE.
- EXPENDABLE ITEMS SUCH AS LIGHT BULBS, BATTERIES AND ETC.
- LANDING GEAR SWITCH

WHAT WILL PFC DO IN THE EVENT OF AN APPROVED WARRANTY CLAIM...

IF DURING THE WARRANTY PERIOD YOU SUBMIT A WARRANTY CLAIM AND IT IS APPROVED BY PFC, AT PFC'S SOLE DISCRETION WE WILL:

- REPAIR THE PRODUCT USING NEW OR RECONDITIONED PARTS WHICH ARE FUNCTIONALLY EQUIVALENT TO NEW IN PERFORMANCE AND RELIABILITY.
- REPLACE THE PRODUCT USING NEW OR RECONDITIONED PRODUCTS WHICH ARE FUNCTIONALLY EQUIVALENT TO NEW IN PERFORMANCE AND RELIABILITY.
- IN THE EVENT A WARRANTY CLAIM IS APPROVED AND THE PRODUCT IS RETURNED DUE TO DEFECT AS STATED ABOVE, A REFUND IN FULL WILL BE ISSUED.

•

CONTINUED ON NEXT PAGE

WHAT WILL PFC DO IN THE EVENT OF A WARRANTY CLAIM (CONTINUED):

- IF PRODUCT IS RETURNED WITHIN THE WARRANTY PERIOD, BUT THE RETURN IS NOT RELATED TO DEFECT, A REFUND WILL BE ISSUED LESS A FIFTEEN PERCENT (15%) RESTOCKING FEE.

OBTAINING WARRANTY EVALUATION & SERVICE

ALL WARRANTY QUESTIONS OR CLAIMS MUST FIRST BE DIRECTED TO THE PFC TECHNICAL SUPPORT TEAM. PLEASE BE PREPARED TO PROVIDE THE PFC WITH THE PRODUCT SERIAL NUMBER AND/OR PURCHASE INVOICE NUMBER FOR VERIFICATION. PFC'S TECHNICAL SUPPORT TEAM MAY BE REACHED BY:

- PHONE: (916) 414-1316
- EMAIL: TECHSUPPORT@FLYPFC.COM

PFC WILL DETERMINE IF THE PRODUCT HAS FAILED DUE TO DEFECTIVE WORKMANSHIP OR MATERIALS. PFC RESERVES THE RIGHT TO ASSESS FEES ASSOCIATED WITH DIAGNOSTIC SERVICES. IF THE PRODUCT IS DETERMINED TO HAVE AN ISSUE WHICH IS COVERED BY THE WARRANTY, THE CUSTOMER MAY CHOOSE ONE OF SERVICE OPTIONS BELOW:

- **MAIL IN SERVICE**

THIS SERVICE WILL REQUIRE THE CUSTOMER TO SEND THE DEFECTIVE PRODUCT OR PART TO PFC. THE CUSTOMER MUST FOLLOW PFC'S RETURN MATERIAL AUTHORIZATION (RMA) PROCEDURE PRIOR TO RETURNING ANY ITEM. PLEASE NOTE THAT IN THE EVENT AN ITEM IS RETURNED AND THE PACKAGE DOES NOT DISPLAY THE RMA NUMBER (PER THE RMA PROCESS), THE DELIVERY MAY BE REFUSED. FULL INSTRUCTIONS FOR PFC'S RMA PROCESS CAN BE FOUND AT: https://flypfc.com/wp-content/uploads/support/rma_form.pdf

- **ADVANCE REPLACEMENT PART SERVICE**

THIS SERVICE ALLOWS OUR CUSTOMERS TO SERVICE THEIR OWN PFC PRODUCT. PFC WILL SEND THE REPLACEMENT PART SO THE CUSTOMER MAY PERFORM THE INSTALLATION OF THE PART. PFC WILL REQUIRE ADVANCE PAYMENT FOR THE PART AND SHIPPING CHARGES. THE ORIGINAL PART MUST BE RETURNED TO PFC VIA A REPUTABLE SHIPPING SERVICE WITHIN TEN (10) BUSINESS DAYS. IN THE EVENT THE CUSTOMER DOES NOT RETURN THE PART WITHIN THE ALLOTTED TIME PERIOD, NO REFUND WILL BE ISSUED.

CONTINUED ON NEXT PAGE

WARRANTY SERVICE OPTIONS (CONTINUED):

• ON-SITE REPAIR SERVICE

THIS SERVICE IS AVAILABLE FOR ADVANCED AVIATION TRAINING DEVICE (AATD) ONLY. SCHEDULE PERMITTING, PFC WILL SEND A TECHNICIAN TO YOUR LOCATION TO SERVICE THE AATD. AFTER THE FIRST 90 DAYS FROM THE DATE OF SHIPMENT, THE CUSTOMER WILL BE RESPONSIBLE FOR ALL EXPENSES AND LABOR COST FOR THE ON-SITE SERVICE.

WARRANTY FOR REPLACEMENT PARTS OR UNITS

ANY REPLACEMENT PARTS OR UNIT PROVIDED DURING THE WARRANTY PERIOD WILL BE COVERED BY THE REMAINING BALANCE OF TIME ON THE CUSTOMER'S ORIGINAL LIMITED WARRANTY. REPLACEMENT PARTS WILL NOT BE COVERED BY AN EXTENDED OR SEPARATE WARRANTY PERIOD.

RETURN SHIPMENT OPTIONS...

PFC, AT ITS OWN EXPENSE, WILL SHIP THE REPAIRED OR REPLACEMENT PRODUCT TO THE CUSTOMER'S ORIGINAL SHIPPING ADDRESS AS REFLECTED ON THE ORIGINAL ORDER/INVOICE. PFC WILL SHIP VIA UPS GROUND OR AN EQUIVALENT SERVICE. IF EXPEDITED SHIPPING IS REQUIRED, THE CUSTOMER WILL BE RESPONSIBLE FOR ALL SHIPPING CHARGES.

THE SELLER DISCLAIMS ANY AND ALL WARRANTIES, EXPRESS OR IMPLIED, STATUTORY OR OTHERWISE, INCLUDING WARRANTIES OF MERCHANTABILITY OR FITNESS FOR A PARTICULAR PURPOSE. SELLER DOES NOT WARRANT THAT THE ANY OF ITS PRODUCTS, ITS USE OR OPERATION OR THE SERVICES PROVIDED UNDER THIS AGREEMENT WILL BE ERROR-FREE, WITHOUT ACCIDENT OR ACHIEVE ANY PARTICULAR GOAL OR RESULT. NO ORAL OR WRITTEN INFORMATION OR ADVICE GIVEN BY AN AUTHORIZED SELLER'S REPRESENTATIVE SHALL CREATE ANY WARRANTY. THIS DISCLAIMER CONSTITUTES AN ESSENTIAL PART OF THIS LIMITED WARRANTY. IN NO EVENT AND UNDER NO LEGAL THEORY SHALL SELLER, ITS OFFICERS, EMPLOYEES OR REPRESENTATIVES BE LIABLE TO BUYER OR ANY OTHER PERSON FOR LOST PROFITS, BUSINESS INTERRUPTION, DAMAGE TO EQUIPMENT, PERSONAL INJURY OR ANY OTHER DIRECT, INDIRECT, INCIDENTAL, CONSEQUENTIAL OR PUNITIVE DAMAGES ARISING OUT OF OR RELATED TO THIS LIMITED WARRANTY OR THE GOODS OR SERVICES SUPPLIED, WHETHER FROM BREACH OF CONTRACT, BREACH OF WARRANTY, TORT (INCLUDING NEGLIGENCE) OR ANY OTHER FORM OF ACTION, EVEN IF SELLER HAS BEEN ADVISED OF THE POSSIBILITY OF SUCH DAMAGES. WITHOUT LIMITING THE FOREGOING, SELLER IS NOT LIABLE FOR BUYER'S IMPROPER USE, INSTALLATION, ACCIDENTS, OPERATION OR MAINTENANCE OF ANY PRODUCT OR OTHER ITEMS MANUFACTURED BY SELLER.