



Precision Flight Controls, Inc.

SERIAL CAT III System and X-Plane Setup Guide



(Shown with optional Garmin 430)

Preface

This setup guide will walk you through the necessary steps to setup your console with X-Plane 9.XX. For connection diagram please refer to the packet that you received with the console.

This setup guide assumes that you have already installed the X-Plane 9.XX software. If you have not installed the X-Plane 9.XX, please install it now and refer to this guide once installation is done. For reference on software installation, please refer to the software manual that you have received.

Getting the COM Port information:

The COM port or serial port is a port used by the Cirrus 2 Professional to communicate to X-Plane. It is important to know the correct COM port number that your C2Pro is connected to as this information will be necessary for proper communication between X-Plane and C2Pro. The steps below will guide you to find out the correct com port number.

1. Is X-Plane running? If it is, please exit the X-Plane by moving your mouse to the top of the screen and click on FILE and then QUIT.
2. Go to Start then choose Control Panel.
3. If you are seeing **Pick a category**, choose **Performance & Maintenance** then choose **System**. If not just choose **System**.
4. From the **Systems Window**, choose **Hardware** then **Device Manager**
5. Expand the **Ports** list by clicking on the plus (+) sign
6. Make a note of the numbers on the Communications Port.
7. Close the Device Manager window, the System Window and the Control Panel Window.

Setting Up X-Plane

8. Start X-Plane.
9. If a warning box comes up saying "**PFC Hardware is not found; do not use sim for flight training**" or "**Frame rate check passed, PFC hardware found, Flight Training is Approved**", press the Enter key.
10. At this point you should see an aircraft at the end of a runway, if you do, move the mouse all the way to the top and from the menu bar, choose **Settings**.
11. Choose **Joystick, Keys & Equipment**, then choose **Equipment Tab**
12. Enable the check boxes as shown in **Figure 1.1**
13. Once all the options pictured are enabled, change the com port number of the "**COM PORT for SERIAL OUT TO PFC HARDWARE**" to the one that you noted from Step 6. If the warning box in step 9 says "Frame rate check passed, PFC hardware found, Flight Training is approved" skip this step and proceed to step 14.
14. Now that you have selected correct com port, close the Equipment Window by clicking on the (x) upper left hand corner.
15. Now move the mouse all the way to the top and from the menu bar choose **File** then choose **Quit**.
16. Once you are back in Windows Desktop start X-Plane again.
17. If after restarting X-Plane you still get the error "PFC Hardware is not found; do not use sim for flight training" go back to Step 13 and change the COM port number again until you get "FRAME RATE CHECK PASSED,PFC HARDWARE FOUND, FLIGHT TRAINING IS APPROVED." Once this message appears go to Step 18

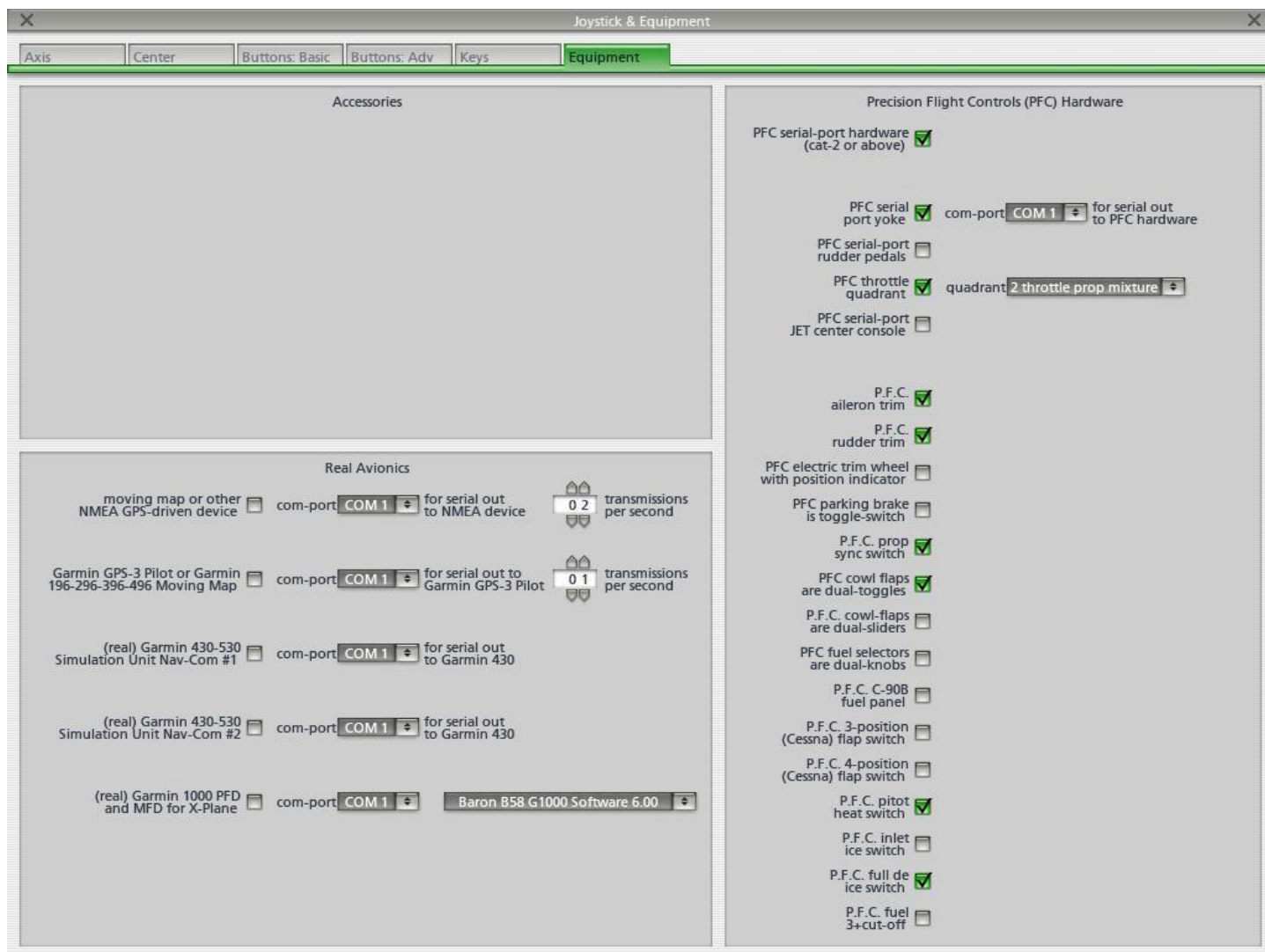


Figure 1.1

Calibration:

18. Start X-Plane
19. A warning box will come up stating "Frame rate check passed, PFC hardware found, Flight Training is Approved"
20. Press the enter key.
21. Now move the mouse all the way to the top and from the menu bar, choose **Settings**. If you do not see a menu bar, you will need to close the map by clicking on the X upper left hand corner. Once closed, move your mouse to the top again choose **Settings**.
22. From the **Settings**, choose **Joystick & Equipment**, and then choose **Center**.

Power Quadrant Calibration:

23. Make sure that you have a 6-lever or twin-prop lever installed to the console. Once installed, push all levers to full forward position.
24. Click on **SET MAX** on **Throt1, Throt2, Throt3, Throt4, Throt5, and Throt6**.
25. Pull the levers all the way to aft position or bottom.
26. Click on **SET MIN** on **Throt1, Throt2, Throt3, Throt4, Throt5, and Throt6**.

Aileron Calibration:

27. Now turn and hold your yoke all the way to the **LEFT** and click on **Set LEFT** on **ROLL**.
28. Now turn and hold your yoke all the way to the **RIGHT** and click on **Set RIGHT** on **ROLL**.
29. Center the yoke now and click on **SET CENTER** on **ROLL**.

Elevator Calibration:

30. Pull the and hold yoke all the way **out** and click on **SET UP** on **PITCH**.
31. Push and hold the yoke all the way **in** and click on **SET DOWN** on **PITCH**.
32. Center the yoke now and click on **SET CENTER** on **PITCH**.

Trim Calibration:

33. Make sure the **Aileron Trim** is turned all the way to the **left** and click on **SET LEFT** on **AIL TRIM**.
34. Make sure the **Aileron Trim** is turned all the way to the **Right** and click on **SET RIGHT** on **AIL TRIM**.
35. Now make sure that the **Aileron Trim** is **Centered** and click on **Set Center**.
36. Make sure the **Rudder Trim** is turned all the way to the **left** and click on **SET LEFT** on **RUD TRIM**.
37. Make sure the **Rudder Trim** is turned all the way to the **Right** and click on **SET RIGHT** on **RUD TRIM**.
38. Now make sure that the **Rudder Trim** is **Centered** and click on **Set Center** on **RUD TRIM**.

If you do not have Precision Flight Controls Cirrus Pedals please skip this step. Please also go back to Step 12 and **Disable** the **PFC Serial Port Rudder Pedals**.

39. Push the **Right Pedal** all the way to the **Right** and click on **SET RIGHT** on the **RUDDER**
40. Push the **LEFT Pedal** all the way to the **Left** and click on **SET LEFT** on the **RUDDER**
41. Center the **PEDALS** now and click on **SET CENTER** on **RUDDER**
42. We're almost done, step on both of your brakes at the same time and click on **SET MAX** on the **LEFT BRAKE** and **RIGHT BRAKE**
43. Release both brakes and click on **SET MIN** on the **LEFT BRAKE** and **RIGHT BRAKE**
44. Click on X on the upper left hand corner.
45. Now move your mouse to the top of the screen and click on FILE and then QUIT
46. Start X-Plane again and all the controls should work now.