



Precision Flight Controls, Inc.

Serial Digital Avionics and FS2004 Setup Guide



Preface

This setup guide will walk you through the necessary steps to setup your Serial Digital Avionics with Microsoft Flight Simulator 2004. For connection diagram please refer to diagrams towards the end of this manual.

This setup guide assumes that you have already installed Microsoft Flight Simulator 2004 (FS2004) and have at least run it once. If you have not installed and run FS2004 software, please install it now then run it at least once. Then refer to this guide once done. For reference on software installation, please refer to the software manual that you have received.

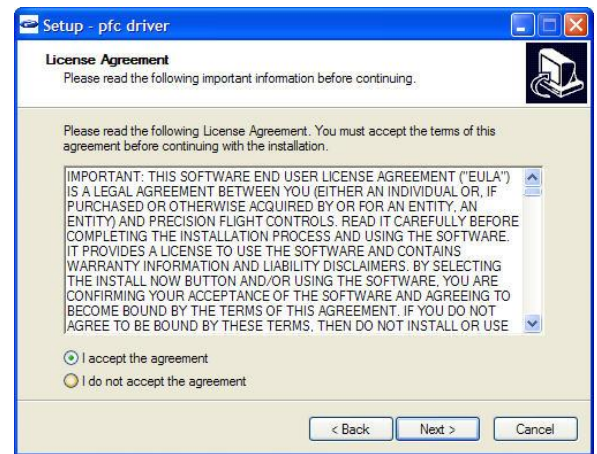
INSTALLATION OF PFC DRIVER (DLL)

The PFC Serial Device Driver for FS2004, which includes the PFC.dll and FSUIPC.dll, is the software that allows serial Precision Flight Controls, Inc. devices to communicate and work with Microsoft Flight Simulator 2004 and Microsoft Flight Simulator X. Because of the internal difference between the FS2004 and FSX please make sure that you have downloaded the appropriate PFC Driver for the software that you are using.

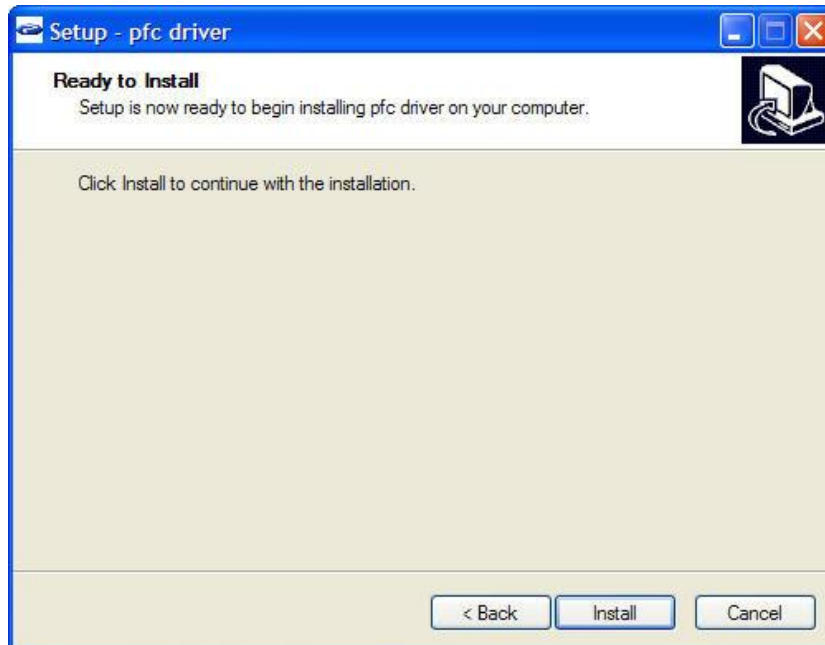
1. Download the PFC Serial FS2004 Driver from our site:
https://www.flypfc.com/downloads/support/drivers/PFC_Serial_FS2004_Driver.exe
2. When you click on the link it will ask where you want to save the file, make sure that you save it on your Desktop.
3. Now that you have downloaded the driver please close your browser.
4. On your desktop, please look for the **PFC_Serial_FS2004_Driver.exe**, and double click on it.
5. Click on **Next**.



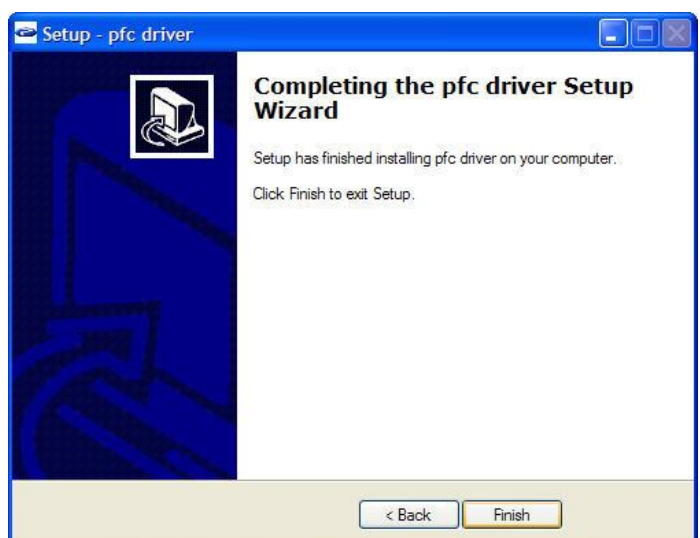
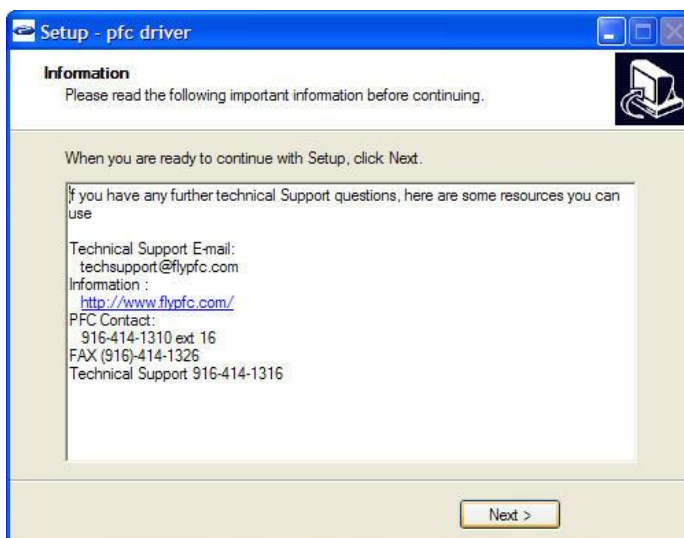
6. Read the license agreement. You will need to **Accept the agreement** to be able to use the driver. If you do not agree click on Cancel and contact us. If you have agree click on **Next**.



7. Now click on **Install**.



8. Now click on **Next** then **Finish**.



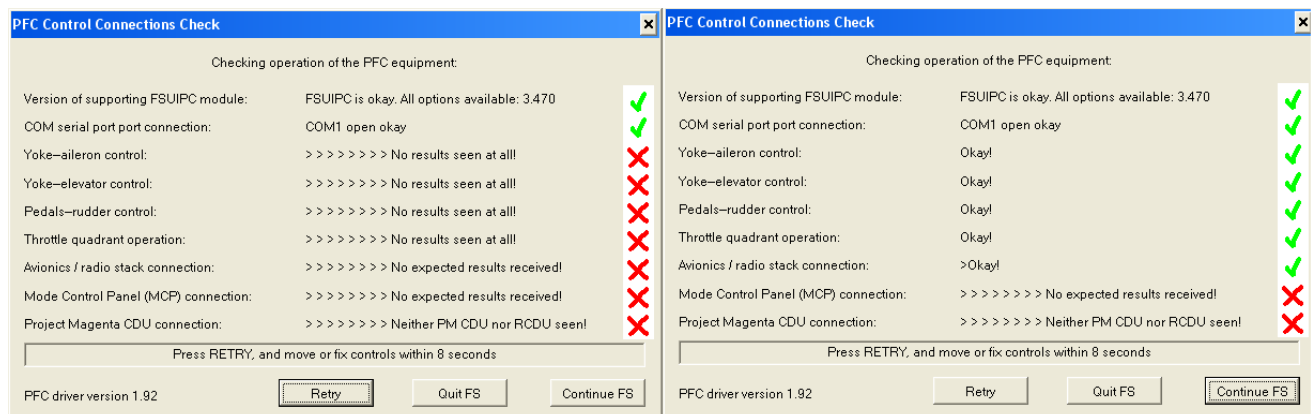
Getting the COM Port information:

The COM port or serial port is a port used by the Serial Digital Avionics to communicate to Microsoft Flight Simulator. It is important to know the correct COM port number that your Cirrus II is connected to. This information will be necessary for proper communication between Microsoft Flight Simulator and Serial Digital Avionics. The steps below will guide you to find out the correct com port number.

1. Let's go to Start, Control Panel
2. Do you see **Pick a Category** or do you see icons such as **Accessibility, Add/Remove Programs**?
3. If you are seeing **pick a category**, then choose **Performance & Maintenance** then choose **System**
4. If you are seeing icons such as **Accessibility, Add/Remove Programs**, choose **System**
5. From the **Systems Window**, choose **Hardware** then **Device Manager**
6. Expand the **Ports** list by clicking on the plus (+) sign
7. Make a note of the com port numbers as you will need this later in your setup.
 - a. My COM Port number/s :_____ and _____
8. Go ahead and close the System Window as well as the Control Panel Window

Hardware Setup

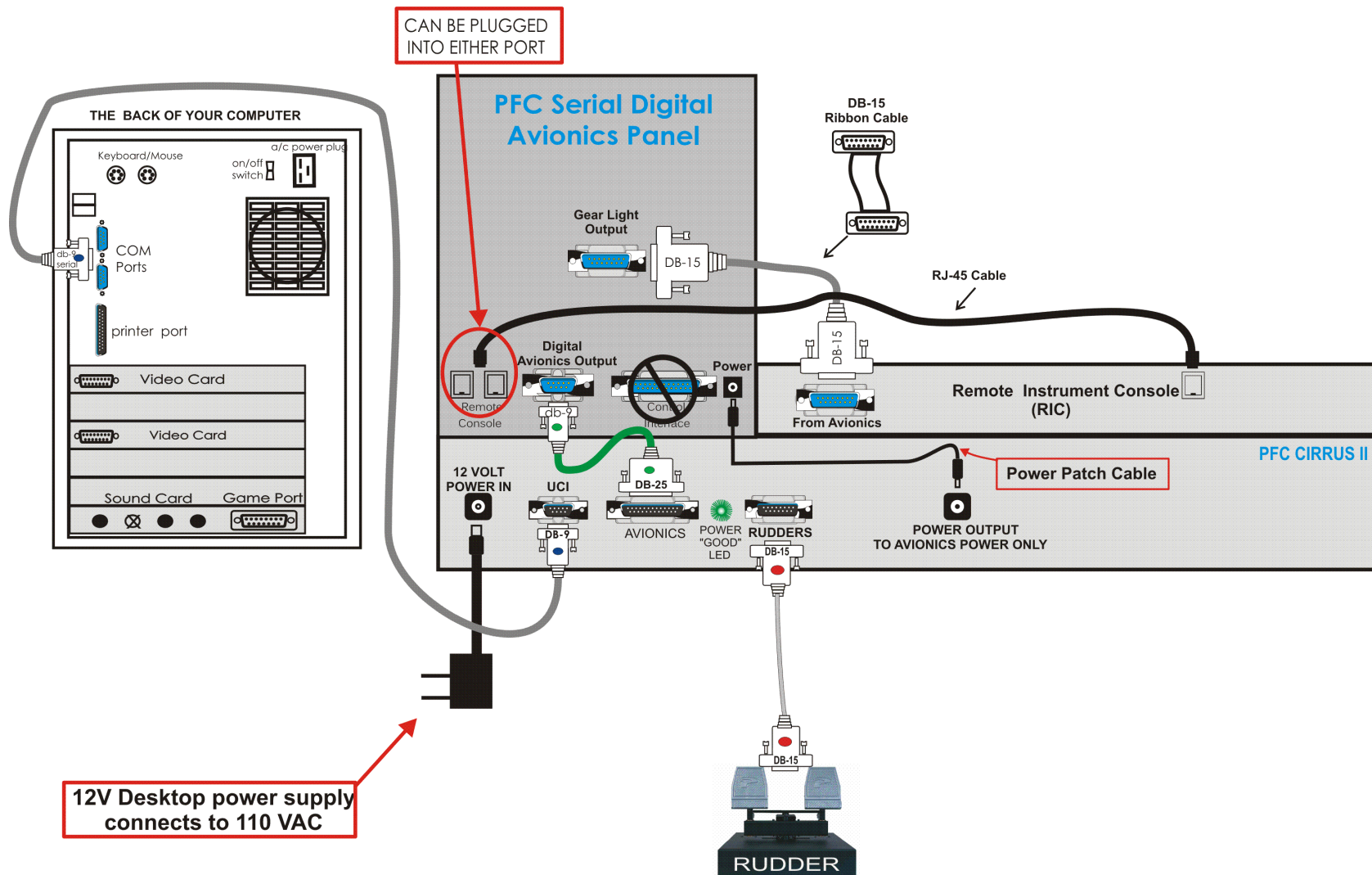
9. Let's start Flight Simulator
10. Once it has completely started, choose **Create a Flight**.
11. Then click on **Fly Now!**
12. Once the flight sim should show a **PFC Control Connections Check** window.



13. Choose the com port which is Com port which is the port that your hardware is connected to.
14. It should say COM (x) open-okay. If it does not say OK look at your notes and see what number your com ports are. If there is more than one, you will need to select on the list and click on retry.

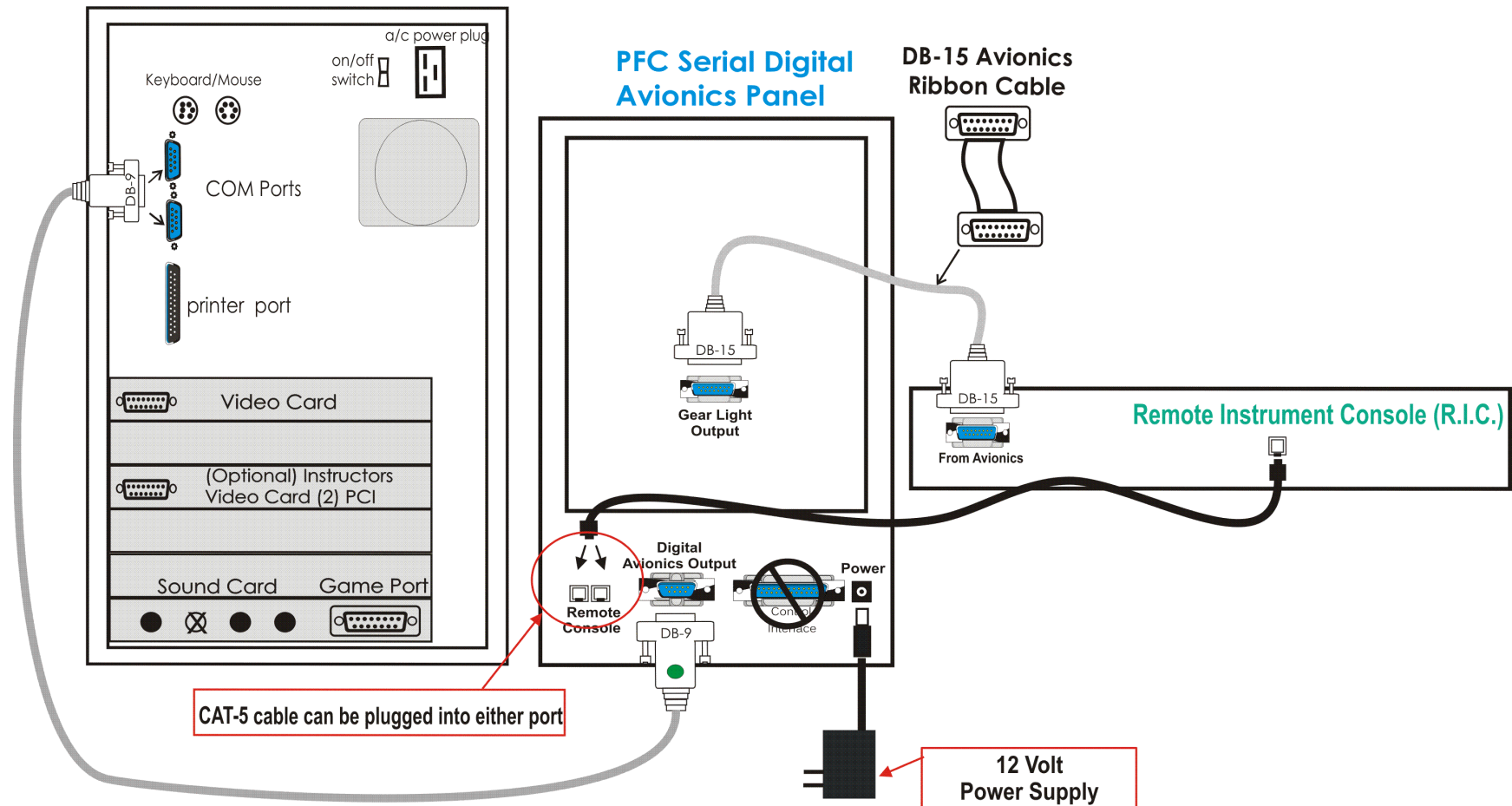
15. If you are only installing the PFC Serial Digital Avionics you will only get a green check on the **Avionics/Radio Stack connection**.
16. Click on **Continue FS**.
17. Exit FS2004 and Restart to save the settings.

PFC CIRRUS II, PFC SERIAL DIGITAL AVIONICS, AND PFC CIRRUS PEDALS INSTALLATION



PFC SERIAL DIGITAL AVIONICS PANEL

THE BACK OF YOUR COMPUTER



PFC DIGITAL THROTTLE QUADRANT CONSOLE PFC SERIAL DIGITAL AVIONICS AND PFC CIRRUS PEDALS INSTALLATION

