



***PRECISION FLIGHT CONTROLS***

# ***PFC Enhanced & Standard Digital Avionics User Guide***



## Preface

This setup guide will walk you through the necessary steps to setup your Precision Flight Controls (PFC) Avionics Panel USB Model with X-Plane 9.xx. If you purchased a complete system such as a CR-12, CAT III, CAT II or CAT I, then use the appropriate setup guide for the complete system. This guide is only to be used with a stand-alone avionics purchase.

To make the PFC Avionics Panel work properly with X-Plane, you need to have the power supply and USB cable connected to your avionics. If you have not done so, please do so now before continuing with this guide.

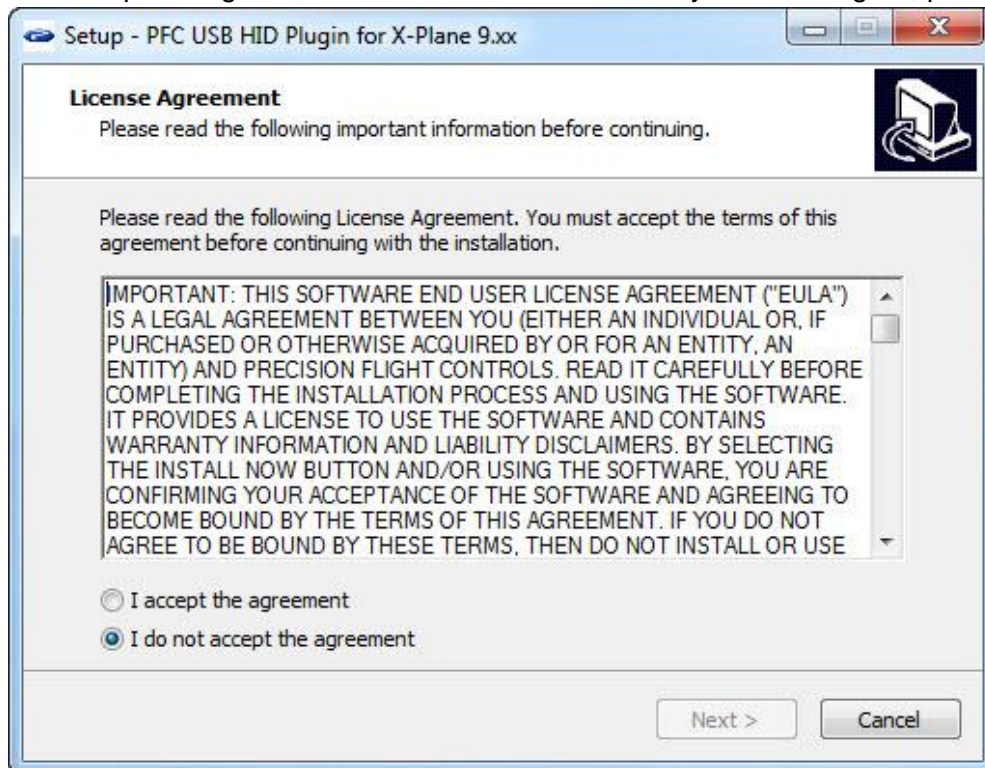
Once the USB cable and power supply is connected properly, you will need to install our USBHIDPLUGIN; this is the driver that allows the PFC Avionics Panel to communicate properly to X-Plane. The USBHID Plugin requires a minimum of X-Plane 9.41 so make sure you have at least X-Plane 9.41.

### Installation of PFCUSBHID PLUGIN for X-PLANE 9.xx

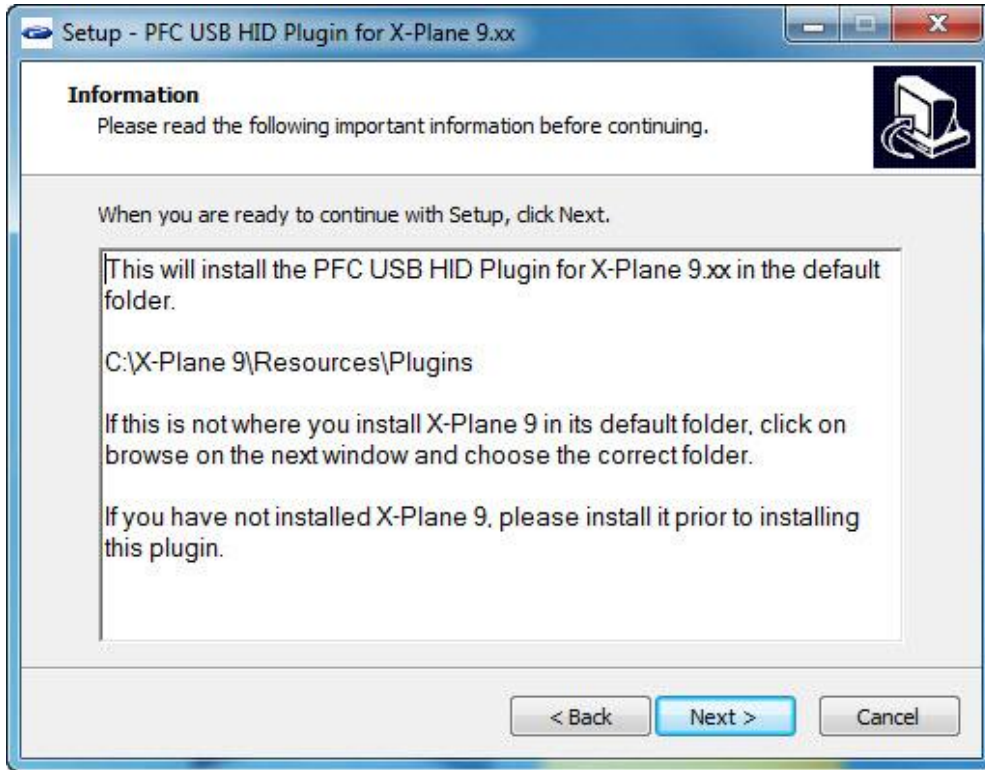
The PFC USBHID plugin, is the software makes USB manufactured by Precision Flight Controls, Inc work with X-Plane 9.41 and higher.

If you are using our serial device/s, please do not install this as they are not compatible. Please refer to your software manual for software installation.

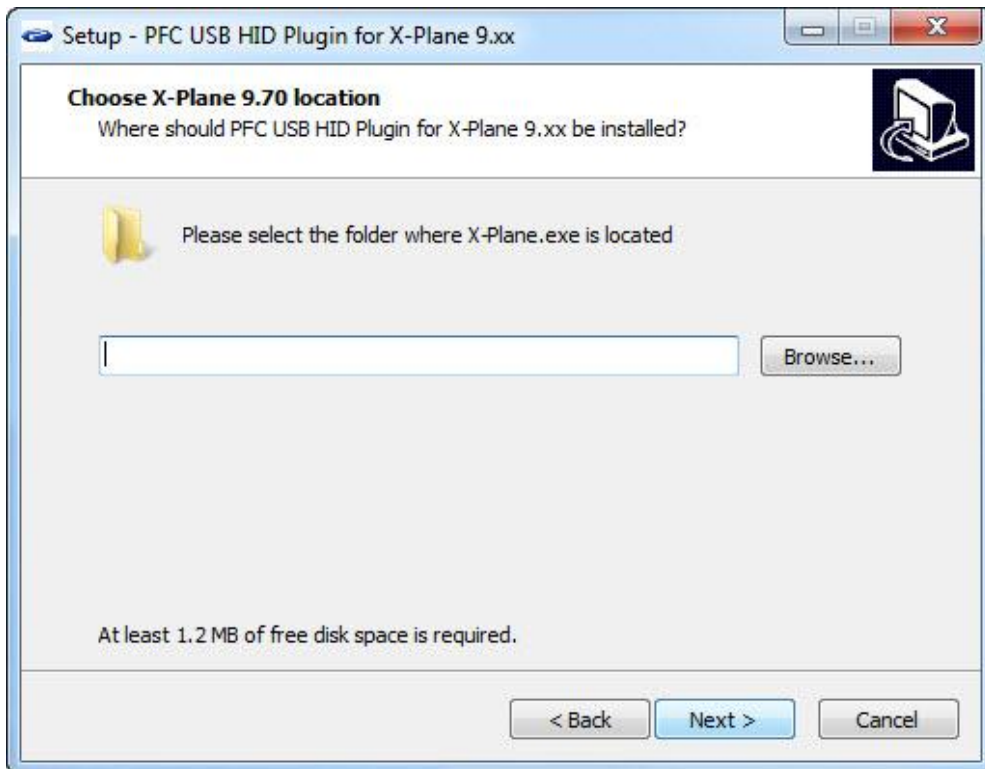
1. Go to <https://flypfc.com/support/#usbdriverutils>.
2. Click on Download PFC USB HiD Plugin for X-Plane 9.70
3. Select the Desktop as your download destination.
4. Unzip the PFCUSBHIDPlugin-XPlane970.zip file.
5. Double click on the PFCUSBHID\_plugin\_XP9.xx\_xxxx.exe
6. Read the license agreement. You will need to Accept the agreement to be able to use the plugin. Click on I accept the agreement and then click on Next. If you do not agree, please click on Cancel.



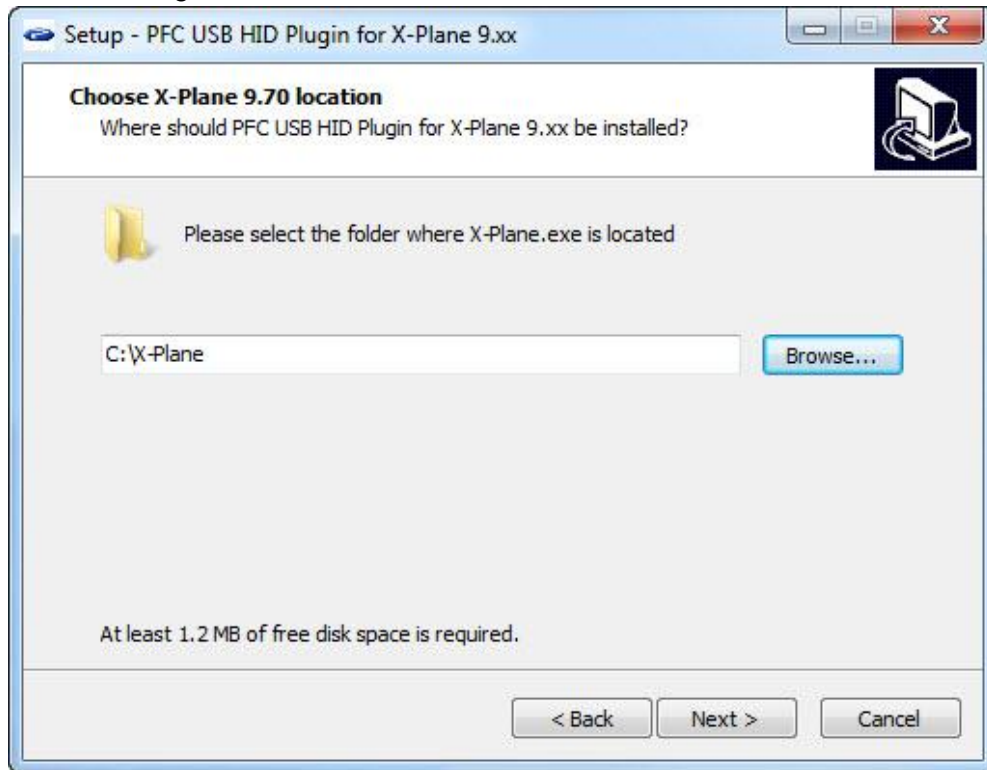
- This explains that the plugin will be installed on the default location of C:\X-Plane\Resources\plugins. If you did not install X-Plane in the default directory above you will need to point the installer to that location in the next step.



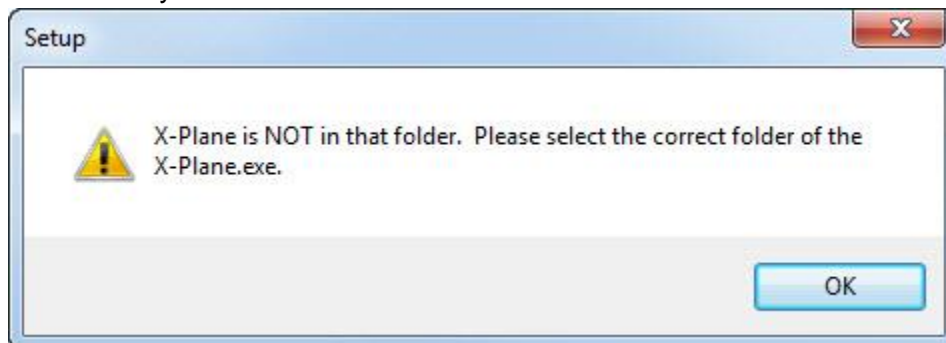
- Click on Browse and select the correct folder where X-Plane.exe is located.



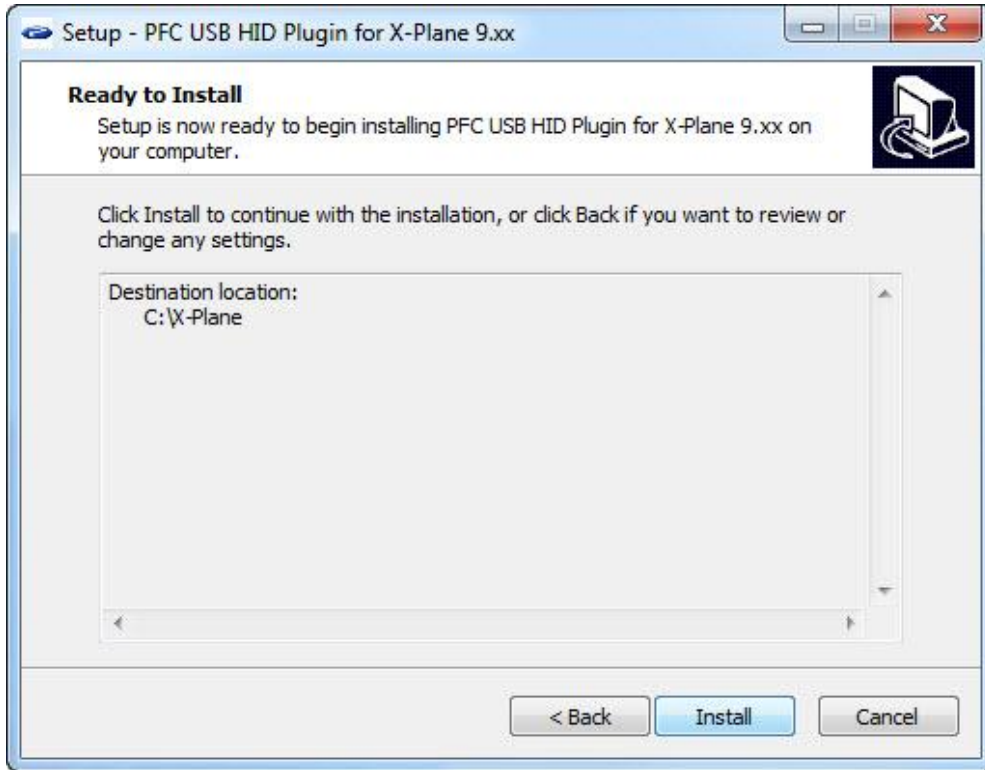
9. After selecting the folder, click on Next.



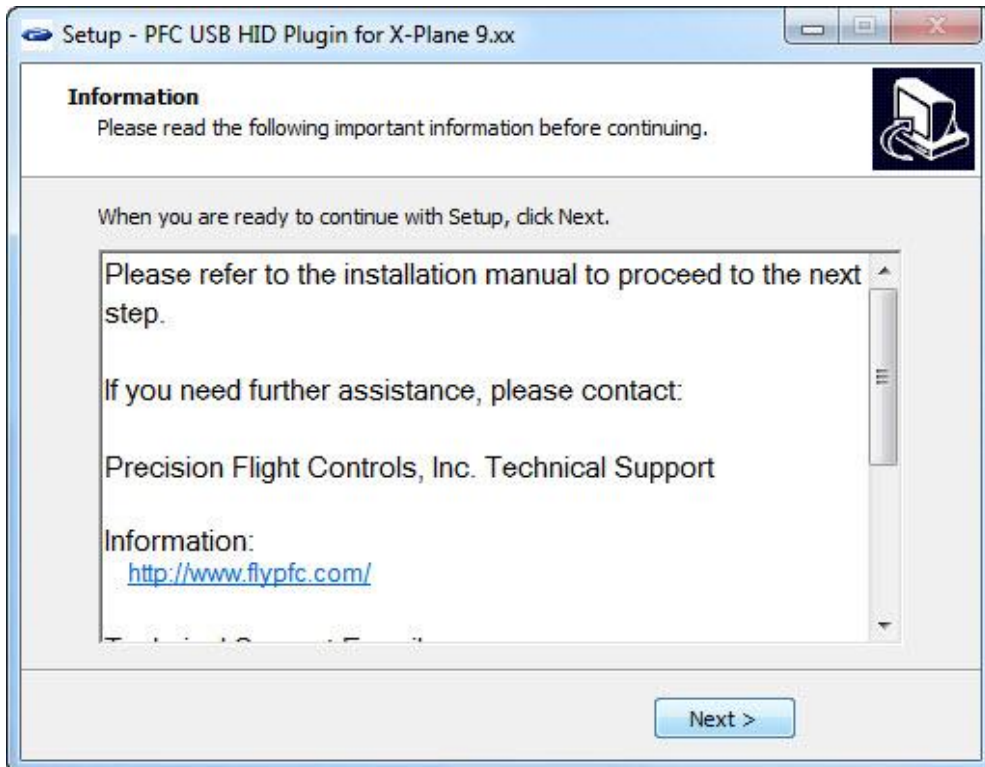
10. If the folder you selected does not contain the X-Plane.exe file this message will come up.



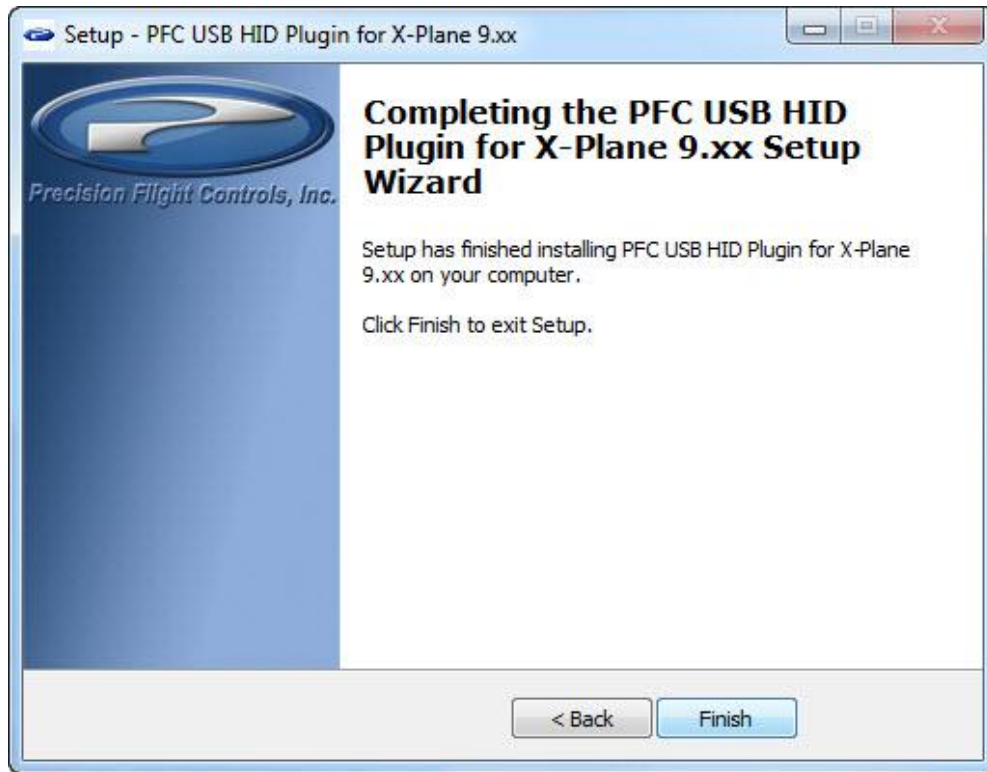
11. If the folder is correct, you will see the window below. Click on the Install to start installation.



12. Now click on Next.



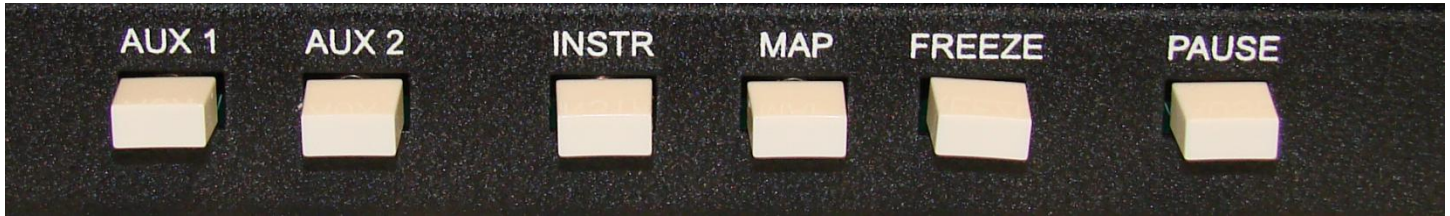
13. Now click on Finish.



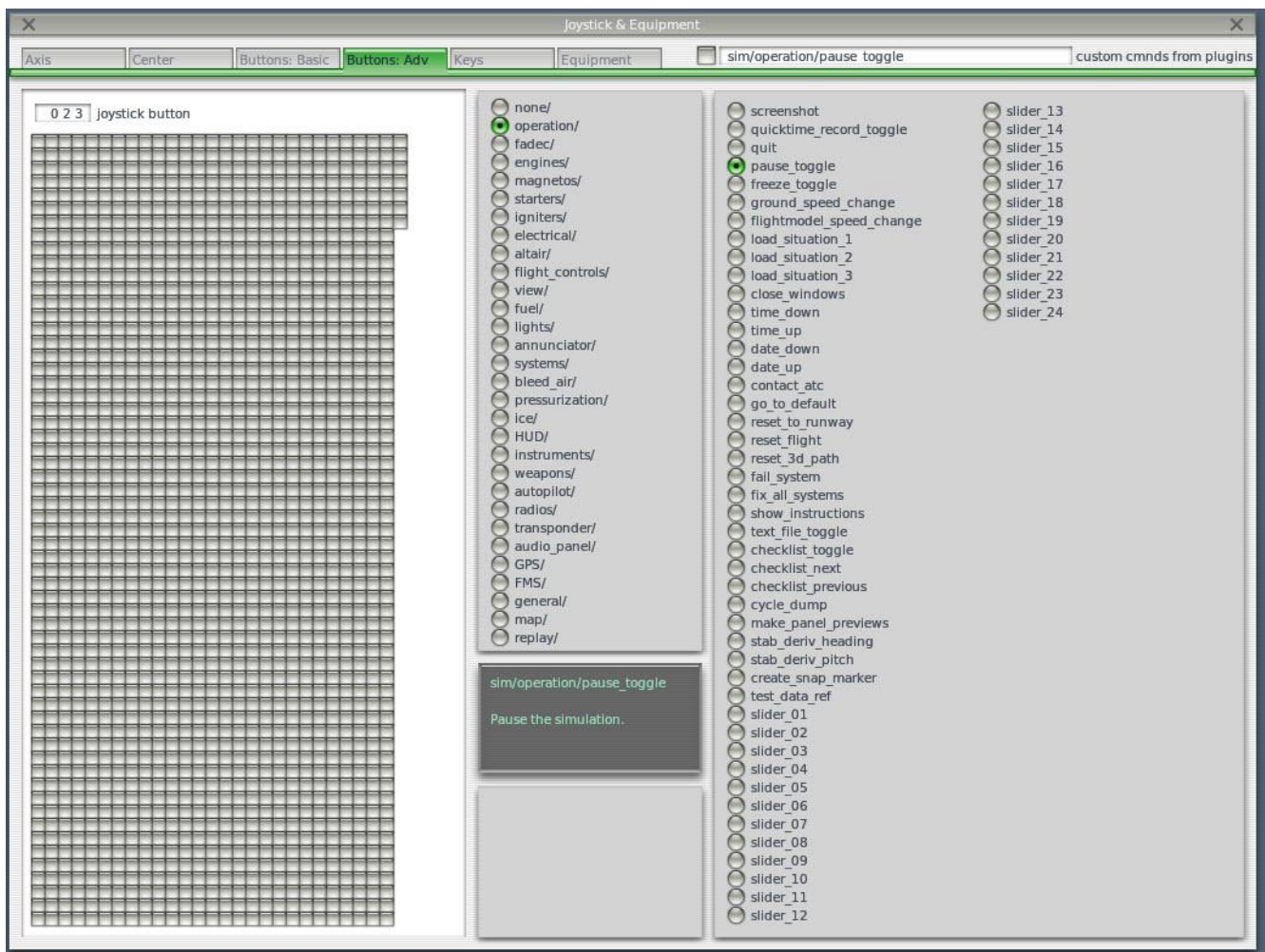
14. After you have installed the plugin, you will need to start X-Plane and then you are ready to use the PFC Digital Avionics panel.

## Auxiliary Button Assignment

The Auxiliary buttons are the white buttons located on the bottom of the PFC Enhanced Avionics Panel.



1. Start X-Plane 9
2. If you have the instructor's station map, click on X on the upper left hand corner.
3. Move your mouse to the top of the screen to show the menu bar.
4. From the menu bar choose Settings.
5. From the settings menu choose Joystick, Keys & Equipment.
6. Go to the Buttons: ADV tab.
7. Press the Pause button and you will notice a number on the top left corner of the window. In this example that number is 23 this may be a different number than what you will see.
8. From the selections on the right choose Operation and then choose Pause Toggle.



The rest of the assignment will be as follows:

| Button Label | Function Location                               |
|--------------|---|
| AUX 1        | Button: ADV → Instruments → Thermo Units Toggle |
| AUX 2        | Button: ADV → Operation → Fix All Systems       |
| INSTR        | Button: ADV → Map → Show Low Enroute            |
| MAP          | Button: ADV → Map → Show High Enroute           |
| FREEZE       | Button: ADV → Operation → Freeze Toggle         |
| PAUSE        | Button: ADV → Operation → Pause Toggle          |

9. Once you have assigned the functions, click on X.
10. Exit and restart X-Plane 9.